

Datasheet for ABIN6242887
anti-LCP1 antibody (AA 305-339)[Go to Product page](#)

1 Image

Overview

Quantity:	400 µL
Target:	LCP1
Binding Specificity:	AA 305-339
Reactivity:	Zebrafish (Danio rerio)
Host:	Rabbit
Clonality:	Polyclonal
Conjugate:	This LCP1 antibody is un-conjugated
Application:	Western Blotting (WB)

Product Details

Immunogen:	This (DANRE) lcp1 antibody is generated from a rabbit immunized with a KLH conjugated synthetic peptide between 305-339 amino acids from the Central region of human (DANRE) lcp1.
Clone:	RB46566
Isotype:	Ig Fraction
Purification:	This antibody is purified through a protein A column, followed by peptide affinity purification.

Target Details

Target:	LCP1
Alternative Name:	lcp1 (LCP1 Products)

Target Details

Background:	Actin-binding protein. Plays a role in the activation of T-cells (By similarity).
Molecular Weight:	69900
UniProt:	Q6P698

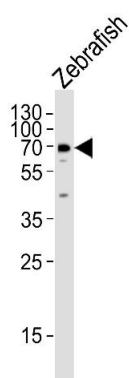
Application Details

Application Notes:	WB: 1:1000
Restrictions:	For Research Use only

Handling

Format:	Liquid
Buffer:	Purified polyclonal antibody supplied in PBS with 0.09 % (W/V) sodium azide.
Preservative:	Sodium azide
Precaution of Use:	This product contains Sodium azide: a POISONOUS AND HAZARDOUS SUBSTANCE which should be handled by trained staff only.
Storage:	4 °C,-20 °C
Expiry Date:	6 months

Images



Western Blotting

Image 1. Western blot analysis of lysate from Zebrafish tissue lysate, using (DANRE) lcp1 Antibody (Center) (ABIN6242887 and ABIN6577486). (ABIN6242887 and ABIN6577486) was diluted at 1:1000. A goat anti-rabbit IgG H&L(HRP) at 1:5000 dilution was used as the secondary antibody. Lysate at 35 µg.