

Datasheet for ABIN6242904  
**anti-MTTP antibody (C-Term)**[Go to Product page](#)

## 2 Images

## Overview

Quantity:	400 µL
Target:	MTTP
Binding Specificity:	AA 878-911, C-Term
Reactivity:	Human
Host:	Rabbit
Clonality:	Polyclonal
Conjugate:	This MTTP antibody is un-conjugated
Application:	Western Blotting (WB), Flow Cytometry (FACS)

## Product Details

Immunogen:	This MTTP antibody is generated from a rabbit immunized with a KLH conjugated synthetic peptide between 878-911 amino acids from the C-terminal region of human MTTP.
Clone:	RB51778
Isotype:	Ig Fraction
Purification:	This antibody is purified through a protein A column, followed by peptide affinity purification.

## Target Details

Target:	MTTP
Alternative Name:	MTTP ( <a href="#">MTTP Products</a> )
Background:	Catalyzes the transport of triglyceride, cholesteryl ester, and phospholipid between

## Target Details

	phospholipid surfaces. Required for the secretion of plasma lipoproteins that contain apolipoprotein B.
Molecular Weight:	99351
UniProt:	<a href="#">P55157</a>
Pathways:	<a href="#">Transition Metal Ion Homeostasis</a>

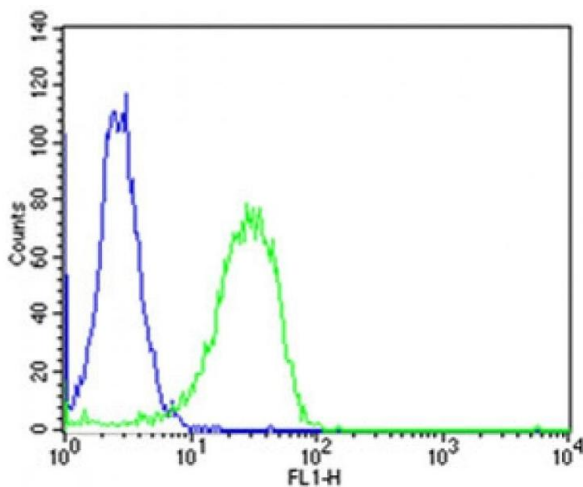
## Application Details

Application Notes:	WB: 1:1000. FC: 1:25
Restrictions:	For Research Use only

## Handling

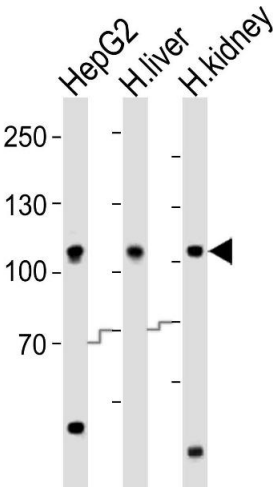
Format:	Liquid
Buffer:	Purified polyclonal antibody supplied in PBS with 0.09 % (W/V) sodium azide.
Preservative:	Sodium azide
Precaution of Use:	This product contains Sodium azide: a POISONOUS AND HAZARDOUS SUBSTANCE which should be handled by trained staff only.
Storage:	4 °C, -20 °C
Expiry Date:	6 months

## Images



### Flow Cytometry

**Image 1.** Flow cytometric analysis of Hela cells using MTTP Antibody (C-term)(green, Cat(ABIN6242904 and ABIN6577849)) compared to an isotype control of rabbit IgG(blue). (ABIN6242904 and ABIN6577849) was diluted at 1:25 dilution. An Alexa Fluor® 488 goat anti-rabbit IgG at 1:400 dilution was used as the secondary antibody.



Western Blotting

**Image 2.** Western blot analysis of lysates from HepG2 cell line, human liver, human kidney tissue (from left to right), using MTTP Antibody (C-term) (ABIN6242904 and ABIN6577849). (ABIN6242904 and ABIN6577849) was diluted at 1:1000 at each lane. A goat anti-rabbit IgG H&L(HRP) at 1:10000 dilution was used as the secondary antibody. Lysates at 20 µg per lane.