

Datasheet for ABIN6242919  
**anti-PPP2R2A antibody (N-Term)**[Go to Product page](#)

## 1 Image

## Overview

Quantity:	400 µL
Target:	PPP2R2A
Binding Specificity:	AA 126-160, N-Term
Reactivity:	Human, Mouse, Rat
Host:	Rabbit
Clonality:	Polyclonal
Conjugate:	This PPP2R2A antibody is un-conjugated
Application:	Western Blotting (WB)

## Product Details

Immunogen:	This PPP2R2A antibody is generated from a rabbit immunized with a KLH conjugated synthetic peptide between 126-160 amino acids from the N-terminal region of human PPP2R2A.
Clone:	RB52629
Isotype:	Ig Fraction
Purification:	This antibody is purified through a protein A column, followed by peptide affinity purification.

## Target Details

Target:	PPP2R2A
Alternative Name:	PPP2R2A ( <a href="#">PPP2R2A Products</a> )
Background:	The B regulatory subunit might modulate substrate selectivity and catalytic activity, and also

## Target Details

	might direct the localization of the catalytic enzyme to a particular subcellular compartment.
Molecular Weight:	51692
UniProt:	<a href="#">P63151</a>
Pathways:	<a href="#">Mitotic G1-G1/S Phases</a> , <a href="#">Hepatitis C</a>

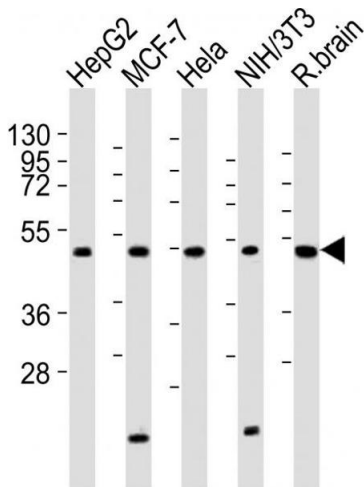
## Application Details

Application Notes:	WB: 1:2000
Restrictions:	For Research Use only

## Handling

Format:	Liquid
Buffer:	Purified polyclonal antibody supplied in PBS with 0.09 % (W/V) sodium azide.
Preservative:	Sodium azide
Precaution of Use:	This product contains Sodium azide: a POISONOUS AND HAZARDOUS SUBSTANCE which should be handled by trained staff only.
Storage:	4 °C,-20 °C
Expiry Date:	6 months

## Images



### Western Blotting

**Image 1.** All lanes : Anti-P2R2A Antibody (N-term) at 1:2000 dilution Lane 1: HepG2 whole cell lysates Lane 2: MCF-7 whole cell lysates Lane 3: Hela whole cell lysates Lane 4: NIH/3T3 whole cell lysates Lane 5: rat brain lysates Lysates/proteins at 20 µg per lane. Secondary Goat Anti-Rabbit IgG, (H+L), Peroxidase conjugated at 1/10000 dilution Predicted band size : 52 kDa Blocking/Dilution buffer: 5 % NFDM/TBST.