

Datasheet for ABIN6242920
anti-PPP6C antibody (C-Term)[Go to Product page](#)

2 Images

1 Publication

Overview

Quantity:	400 µL
Target:	PPP6C
Binding Specificity:	AA 275-305, C-Term
Reactivity:	Human
Host:	Rabbit
Clonality:	Polyclonal
Conjugate:	This PPP6C antibody is un-conjugated
Application:	Western Blotting (WB), Immunohistochemistry (Paraffin-embedded Sections) (IHC (p))

Product Details

Immunogen:	This PPP6C antibody is generated from rabbits immunized with a KLH conjugated synthetic peptide between 275-305 amino acids from the C-terminal region of human PPP6C.
Clone:	RB5867
Isotype:	Ig Fraction
Predicted Reactivity:	M, Rat
Purification:	This antibody is prepared by Saturated Ammonium Sulfate (SAS) precipitation followed by dialysis against PBS.

Target Details

Target:	PPP6C
---------	-------

Target Details

Alternative Name:	PPP6C (PPP6C Products)
Background:	PPP6C belongs to the PPP phosphatase family, PP-V subfamily. Reversible phosphorylation of proteins on serine and threonine residues is an important biochemical event that regulates a broad variety of intracellular processes. The phosphorylation state is determined by the well-controlled balance of activities of serine/threonine-specific protein kinases and protein phosphatases, including PPP6C. Expression levels are highest in testis, heart, and skeletal muscle and lowest in placenta, lung, and kidney. PPP6C can complement mutations in the <i>S. cerevisiae</i> Sit4 and <i>S. pombe</i> ppe1 genes, indicating that PPP6C is the functional homolog of yeast Sit4p and ppe1. Since Sit4p is required for the G1 to S transition of the cell cycle and ppe1 is involved in cell shape control and mitotic division, it has been suggested that PPP6C functions in cell cycle regulation.
Molecular Weight:	35144
NCBI Accession:	NP_001116827 , NP_001116841 , NP_002712
UniProt:	O00743

Application Details

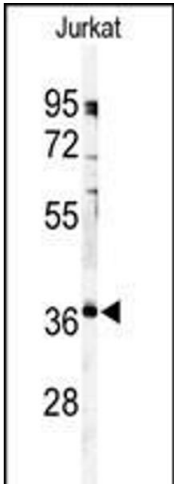
Application Notes:	WB: 1:1000. IHC-P: 1:50~100
Restrictions:	For Research Use only

Handling

Format:	Liquid
Buffer:	Purified polyclonal antibody supplied in PBS with 0.09 % (W/V) sodium azide.
Preservative:	Sodium azide
Precaution of Use:	This product contains Sodium azide: a POISONOUS AND HAZARDOUS SUBSTANCE which should be handled by trained staff only.
Storage:	4 °C, -20 °C
Expiry Date:	6 months

Publications

Product cited in:	Wu, Zhang, Xu, Zou, Zhou, Cai, Li, Song: "Regulation of global gene expression and cell proliferation by APP." in: Scientific reports , Vol. 6, pp. 22460, (2017) (PubMed).
-------------------	--



Immunohistochemistry (Paraffin-embedded Sections)

Image 1. P6C Antibody (C-term) (ABIN6242920 and ABIN6579047) immunohistochemistry analysis in formalin fixed and paraffin embedded human skeletal muscle followed by peroxidase conjugation of the secondary antibody and DAB staining. This data demonstrates the use of the P6C Antibody (C-term) for immunohistochemistry. Clinical relevance has not been evaluated.

Western Blotting

Image 2. Western blot analysis of anti-P6C Antibody (C-term) (ABIN6242920 and ABIN6579047) in Jurkat cell line lysates (35 µg/lane). P6C(arrow) was detected using the purified Pab.