

Datasheet for ABIN6242931  
**anti-EIF1 antibody (C-Term)**[Go to Product page](#)

## 2 Images

## Overview

Quantity:	400 µL
Target:	EIF1
Binding Specificity:	AA 100-133, C-Term
Reactivity:	Human, Mouse
Host:	Rabbit
Clonality:	Polyclonal
Conjugate:	This EIF1 antibody is un-conjugated
Application:	Western Blotting (WB)

## Product Details

Immunogen:	This EIF1 antibody is generated from a rabbit immunized with a KLH conjugated synthetic peptide between 100-133 amino acids from the C-terminal region of human EIF1.
Clone:	RB43570
Isotype:	Ig Fraction
Purification:	This antibody is purified through a protein A column, followed by peptide affinity purification.

## Target Details

Target:	EIF1
Alternative Name:	EIF1 ( <a href="#">EIF1 Products</a> )
Background:	Necessary for scanning and involved in initiation site selection. Promotes the assembly of 48S

## Target Details

ribosomal complexes at the authentic initiation codon of a conventional capped mRNA.

Molecular Weight: 12732

UniProt: [P41567](#)

## Application Details

Application Notes: WB: 1:500. WB: 1:2000

Restrictions: For Research Use only

## Handling

Format: Liquid

Buffer: Purified polyclonal antibody supplied in PBS with 0.09 % (W/V) sodium azide.

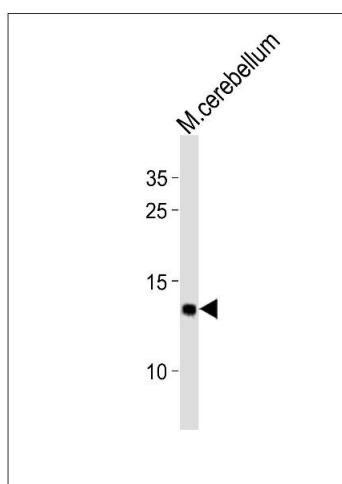
Preservative: Sodium azide

Precaution of Use: This product contains Sodium azide: a POISONOUS AND HAZARDOUS SUBSTANCE which should be handled by trained staff only.

Storage: 4 °C, -20 °C

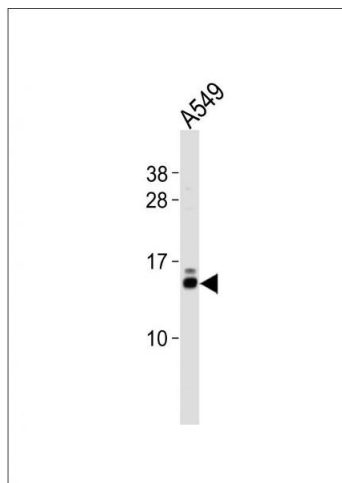
Expiry Date: 6 months

## Images



### Western Blotting

**Image 1.** Western blot analysis of lysates from mouse cerebellum tissue (from left to right), using EIF1 Antibody (C-term) (ABIN6242931 and ABIN6577889). (ABIN6242931 and ABIN6577889) was diluted at 1:2000 at each lane. A goat anti-rabbit IgG H&L(HRP) at 1:10000 dilution was used as the secondary antibody.



### Western Blotting

**Image 2.** Western blot analysis of lysate from A549 cell line, using EIF1 Antibody (C-term) (ABIN6242931 and ABIN6577889). (ABIN6242931 and ABIN6577889) was diluted at 1:500. A goat anti-rabbit IgG H&L(HRP) at 1:10000 dilution was used as the secondary antibody. Lysate at 20  $\mu$ g.