

Datasheet for ABIN6242938
anti-CPLX2 antibody (AA 51-83)[Go to Product page](#)

1 Image

Overview

Quantity:	400 µL
Target:	CPLX2
Binding Specificity:	AA 51-83
Reactivity:	Mouse
Host:	Rabbit
Clonality:	Polyclonal
Conjugate:	This CPLX2 antibody is un-conjugated
Application:	Western Blotting (WB)

Product Details

Immunogen:	This CPLX2 antibody is generated from a rabbit immunized with a KLH conjugated synthetic peptide between 51-83 amino acids from the Central region of human CPLX2.
Clone:	RB44455
Isotype:	Ig Fraction
Predicted Reactivity:	B, Rat
Purification:	This antibody is purified through a protein A column, followed by peptide affinity purification.

Target Details

Target:	CPLX2
Alternative Name:	CPLX2 (CPLX2 Products)

Target Details

Background: Negatively regulates the formation of synaptic vesicle clustering at active zone to the presynaptic membrane in postmitotic neurons. Positively regulates a late step in synaptic vesicle exocytosis. Also involved in mast cell exocytosis (By similarity).

Molecular Weight: 15394

UniProt: [Q6PUV4](#)

Pathways: [Synaptic Vesicle Exocytosis](#)

Application Details

Application Notes: WB: 1:1000

Restrictions: For Research Use only

Handling

Format: Liquid

Buffer: Purified polyclonal antibody supplied in PBS with 0.09 % (W/V) sodium azide.

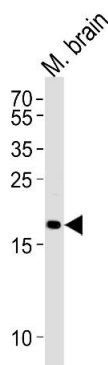
Preservative: Sodium azide

Precaution of Use: This product contains Sodium azide: a POISONOUS AND HAZARDOUS SUBSTANCE which should be handled by trained staff only.

Storage: 4 °C,-20 °C

Expiry Date: 6 months

Images



Western Blotting

Image 1. Western blot analysis of lysate from mouse brain tissue, using CPLX2 Antibody (Center) (ABIN6242938 and ABIN6577510). (ABIN6242938 and ABIN6577510) was diluted at 1:1000. A goat anti-rabbit IgG H&L(HRP) at 1:5000 dilution was used as the secondary antibody. Lysate at 35 µg.