



[Go to Product page](#)

Datasheet for ABIN6242941

anti-KIF22 antibody (AA 423-456)

5 Images

Overview

Quantity:	400 µL
Target:	KIF22
Binding Specificity:	AA 423-456
Reactivity:	Human
Host:	Rabbit
Clonality:	Polyclonal
Conjugate:	This KIF22 antibody is un-conjugated
Application:	Western Blotting (WB), Immunofluorescence (IF), Immunohistochemistry (Paraffin-embedded Sections) (IHC (p))

Product Details

Immunogen:	This KIF22 antibody is generated from a rabbit immunized with a KLH conjugated synthetic peptide between 423-456 amino acids from the Central region of human KIF22.
Clone:	RB53836
Isotype:	Ig Fraction
Purification:	This antibody is purified through a protein A column, followed by peptide affinity purification.

Target Details

Target:	KIF22
Alternative Name:	KIF22 (KIF22 Products)

Target Details

Background:	Kinesin family that is involved in spindle formation and the movements of chromosomes during mitosis and meiosis. Binds to microtubules and to DNA.
Molecular Weight:	73262
UniProt:	Q14807

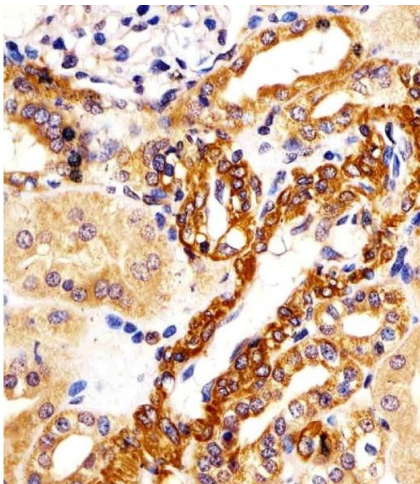
Application Details

Application Notes:	IF: 1:25. WB: 1:2000. WB: 1:2000. IHC-P: 1:25. IHC-P: 1:25
Restrictions:	For Research Use only

Handling

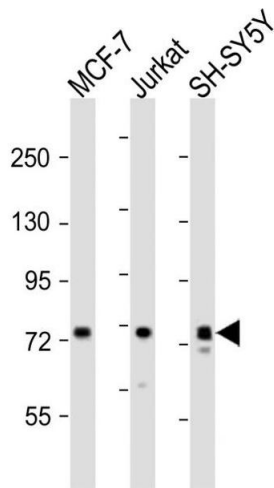
Format:	Liquid
Buffer:	Purified polyclonal antibody supplied in PBS with 0.09 % (W/V) sodium azide.
Preservative:	Sodium azide
Precaution of Use:	This product contains Sodium azide: a POISONOUS AND HAZARDOUS SUBSTANCE which should be handled by trained staff only.
Storage:	4 °C,-20 °C
Expiry Date:	6 months

Images



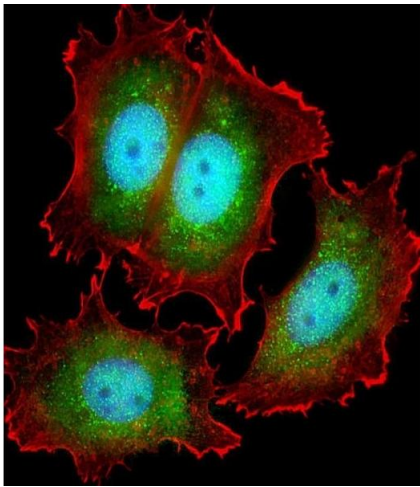
Immunohistochemistry (Paraffin-embedded Sections)

Image 1. (ABIN6242941 and ABIN6578201) staining KIF22 in human kidney tissue sections by Immunohistochemistry (IHC-P - paraformaldehyde-fixed, paraffin-embedded sections). Tissue was fixed with formaldehyde and blocked with 3 % BSA for 0.5 hour at room temperature, antigen retrieval was by heat mediation with a citrate buffer (pH 6). Samples were incubated with primary antibody (1/25) for 1 hour at 37 °C. A undiluted biotinylated goat polyvalent antibody was used as the secondary antibody.



Western Blotting

Image 2. All lanes : Anti-KIF22 Antibody (Center) at 1:2000 dilution Lane 1: MCF-7 whole cell lysates Lane 2: Jurkat whole cell lysates Lane 3: SH-SY5Y whole cell lysates Lysates/proteins at 20 µg per lane. Secondary Goat Anti-Rabbit IgG, (H+L), Peroxidase conjugated at 1/10000 dilution Predicted band size : 73 kDa Blocking/Dilution buffer: 5 % NFDM/TBST.



Immunofluorescence

Image 3. Immunofluorescent analysis of 4 % paraformaldehyde-fixed, 0.1 % Triton X-100 permeabilized MCF-7 (human breast cancer cell line) cells labeling KIF22 with (ABIN6242941 and ABIN6578201) at 1/25 dilution, followed by Dylight® 488-conjugated goat anti-rabbit IgG (NK179883) secondary antibody at 1/200 dilution (green). Immunofluorescence image showing cytoplasm and nucleus staining on MCF-7 cell line. Cytoplasmic actin is detected with Dylight® 554 Phalloidin (PD18466410) at 1/100 dilution (red).The nuclear counter stain is DI (blue).

Please check the [product details page](#) for more images. Overall 5 images are available for ABIN6242941.