



[Go to Product page](#)

Datasheet for ABIN6242942
anti-KIF22 antibody (AA 397-427)

1 Image

Overview

Quantity:	400 µL
Target:	KIF22
Binding Specificity:	AA 397-427
Reactivity:	Human
Host:	Rabbit
Clonality:	Polyclonal
Conjugate:	This KIF22 antibody is un-conjugated
Application:	Western Blotting (WB)

Product Details

Immunogen:	This KIF22 antibody is generated from a rabbit immunized with a KLH conjugated synthetic peptide between 397-427 amino acids from the Central region of human KIF22.
Clone:	RB53835
Isotype:	Ig Fraction
Purification:	This antibody is purified through a protein A column, followed by peptide affinity purification.

Target Details

Target:	KIF22
Alternative Name:	KIF22 (KIF22 Products)
Background:	Kinesin family that is involved in spindle formation and the movements of chromosomes during

Target Details

mitosis and meiosis. Binds to microtubules and to DNA.

Molecular Weight: 73262

UniProt: [Q14807](#)

Application Details

Application Notes: WB: 1:1000

Restrictions: For Research Use only

Handling

Format: Liquid

Buffer: Purified polyclonal antibody supplied in PBS with 0.09 % (W/V) sodium azide.

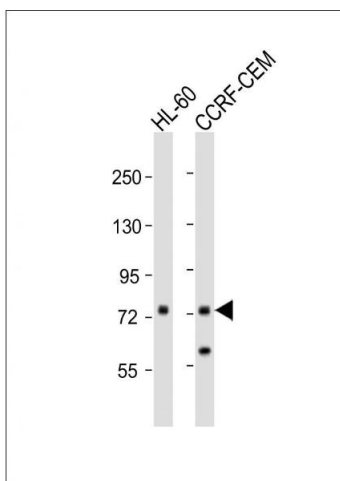
Preservative: Sodium azide

Precaution of Use: This product contains Sodium azide: a POISONOUS AND HAZARDOUS SUBSTANCE which should be handled by trained staff only.

Storage: 4 °C,-20 °C

Expiry Date: 6 months

Images



Western Blotting

Image 1. All lanes : Anti-KIF22 Antibody (Center) at 1:1000 dilution Lane 1: HL-60 whole cell lysates Lane 2: CCRF-CEM whole cell lysates Lysates/proteins at 20 µg per lane. Secondary Goat Anti-Rabbit IgG, (H+L), Peroxidase conjugated at 1/10000 dilution Predicted band size : 73 kDa Blocking/Dilution buffer: 5 % NFDN/TBST.