



[Go to Product page](#)

Datasheet for ABIN6242943  
**anti-MTX2 antibody (AA 102-126)**

1 Image

Overview

Quantity:	400 µL
Target:	MTX2
Binding Specificity:	AA 102-126
Reactivity:	Human
Host:	Rabbit
Clonality:	Polyclonal
Conjugate:	This MTX2 antibody is un-conjugated
Application:	Western Blotting (WB)

Product Details

Immunogen:	This MTX2 antibody is generated from a rabbit immunized with a KLH conjugated synthetic peptide between 102-126 amino acids from the Central region of human MTX2.
Clone:	RB49789
Isotype:	Ig Fraction
Purification:	This antibody is purified through a protein A column, followed by peptide affinity purification.

Target Details

Target:	MTX2
Alternative Name:	MTX2 ( <a href="#">MTX2 Products</a> )
Background:	Involved in transport of proteins into the mitochondrion.

## Target Details

Molecular Weight: 29763

UniProt: [O75431](#)

## Application Details

Application Notes: WB: 1:1000

Restrictions: For Research Use only

## Handling

Format: Liquid

Buffer: Purified polyclonal antibody supplied in PBS with 0.09 % (W/V) sodium azide.

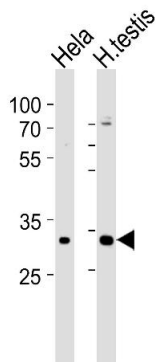
Preservative: Sodium azide

Precaution of Use: This product contains Sodium azide: a POISONOUS AND HAZARDOUS SUBSTANCE which should be handled by trained staff only.

Storage: 4 °C, -20 °C

Expiry Date: 6 months

## Images



### Western Blotting

**Image 1.** Western blot analysis of lysates from HeLa cell line human testis tissue lysate (from left to right), using MTX2 Antibody (Center) (ABIN6242943 and ABIN6577560). (ABIN6242943 and ABIN6577560) was diluted at 1:1000 at each lane. A goat anti-rabbit IgG H&L(HRP) at 1:5000 dilution was used as the secondary antibody. Lysates at 35 µg per lane.