

Datasheet for ABIN6242960
anti-GLRX5 antibody (AA 93-127)[Go to Product page](#)

1 Image

Overview

Quantity:	400 µL
Target:	GLRX5
Binding Specificity:	AA 93-127
Reactivity:	Human
Host:	Rabbit
Clonality:	Polyclonal
Conjugate:	This GLRX5 antibody is un-conjugated
Application:	Western Blotting (WB)

Product Details

Immunogen:	This GLRX5 antibody is generated from a rabbit immunized with a KLH conjugated synthetic peptide between 93-127 amino acids from the Central region of human GLRX5.
Clone:	RB49888
Isotype:	Ig Fraction
Predicted Reactivity:	M
Purification:	This antibody is purified through a protein A column, followed by peptide affinity purification.

Target Details

Target:	GLRX5
Alternative Name:	GLRX5 (GLRX5 Products)

Target Details

Background:	Monothiol glutaredoxin involved in the biogenesis of iron-sulfur clusters. Required for normal iron homeostasis. Required for normal regulation of hemoglobin synthesis by the iron-sulfur protein ACO1.
Molecular Weight:	16628
UniProt:	Q86SX6
Pathways:	Cell RedoxHomeostasis

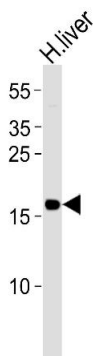
Application Details

Application Notes:	WB: 1:1000
Restrictions:	For Research Use only

Handling

Format:	Liquid
Buffer:	Purified polyclonal antibody supplied in PBS with 0.09 % (W/V) sodium azide.
Preservative:	Sodium azide
Precaution of Use:	This product contains Sodium azide: a POISONOUS AND HAZARDOUS SUBSTANCE which should be handled by trained staff only.
Storage:	4 °C,-20 °C
Expiry Date:	6 months

Images



Western Blotting

Image 1. Western blot analysis of lysate from human liver tissue lysate, using GLRX5 Antibody (Center) (ABIN6242960 and ABIN6577529). (ABIN6242960 and ABIN6577529) was diluted at 1:1000. A goat anti-rabbit IgG H&L(HRP) at 1:5000 dilution was used as the secondary antibody. Lysate at 35 µg.