



[Go to Product page](#)

Datasheet for ABIN6242962
anti-SPTLC3 antibody (AA 503-545)

1 Image

Overview

Quantity:	200 µL
Target:	SPTLC3
Binding Specificity:	AA 503-545
Reactivity:	Human
Host:	Rabbit
Clonality:	Polyclonal
Conjugate:	This SPTLC3 antibody is un-conjugated
Application:	Western Blotting (WB)

Product Details

Immunogen:	This SPTLC3 antibody is generated from a rabbit immunized with a KLH conjugated synthetic peptide between 503-545 amino acids from human SPTLC3.
Clone:	RB55412
Isotype:	Ig Fraction
Purification:	This antibody is purified through a protein A column, followed by peptide affinity purification.

Target Details

Target:	SPTLC3
Alternative Name:	SPTLC3 (SPTLC3 Products)
Background:	Serine palmitoyltransferase (SPT). The heterodimer formed with LCB1/SPTLC1 constitutes the

Target Details

catalytic core. The composition of the serine palmitoyltransferase (SPT) complex determines the substrate preference. The SPTLC1-SPTLC3-SPTSSA isozyme uses both C14-CoA and C16-CoA as substrates, while the SPTLC1-SPTLC3-SPTSSB has the ability to use a broader range of acyl-CoAs without apparent preference.

Molecular Weight: 62049

UniProt: [Q9NUV7](#)

Application Details

Application Notes: WB: 1:2000

Restrictions: For Research Use only

Handling

Format: Liquid

Buffer: Purified polyclonal antibody supplied in PBS with 0.09 % (W/V) sodium azide.

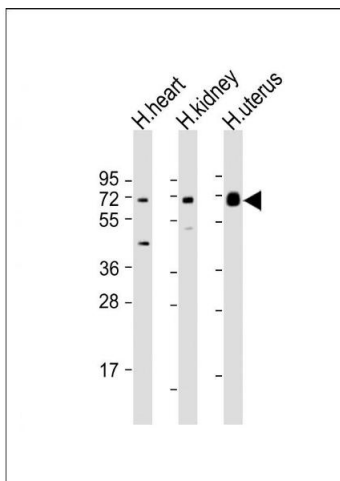
Preservative: Sodium azide

Precaution of Use: This product contains Sodium azide: a POISONOUS AND HAZARDOUS SUBSTANCE which should be handled by trained staff only.

Storage: 4 °C,-20 °C

Expiry Date: 6 months

Images



Western Blotting

Image 1. All lanes : Anti-SPTLC3 Antibody (C-Term) at 1:2000 dilution Lane 1: human heart lysate Lane 2: human kidney lysate Lane 3: human uterus lysate Lysates/proteins at 20 µg per lane. Secondary Goat Anti-Rabbit IgG, (H+L), Peroxidase conjugated at 1/10000 dilution. Predicted band size : 62 kDa Blocking/Dilution buffer: 5 % NFD/MTBST.