



[Go to Product page](#)

Datasheet for ABIN6242984

anti-ETV1 antibody (AA 32-65)

1 Image

Overview

Quantity:	400 µL
Target:	ETV1
Binding Specificity:	AA 32-65
Reactivity:	Human
Host:	Rabbit
Clonality:	Polyclonal
Conjugate:	This ETV1 antibody is un-conjugated
Application:	Western Blotting (WB)

Product Details

Immunogen:	This ETV1 antibody is generated from a rabbit immunized with a KLH conjugated synthetic peptide between 32-65 amino acids from human ETV1.
Clone:	RB53752
Isotype:	Ig Fraction
Purification:	This antibody is purified through a protein A column, followed by peptide affinity purification.

Target Details

Target:	ETV1
Alternative Name:	ETV1 (ETV1 Products)
Background:	Transcriptional activator that binds to DNA sequences containing the consensus

Target Details

pentanucleotide 5'-CGGA[AT]-3'.

Molecular Weight: 55131

UniProt: [P50549](#)

Application Details

Application Notes: WB: 1:1000

Restrictions: For Research Use only

Handling

Format: Liquid

Buffer: Purified polyclonal antibody supplied in PBS with 0.09 % (W/V) sodium azide.

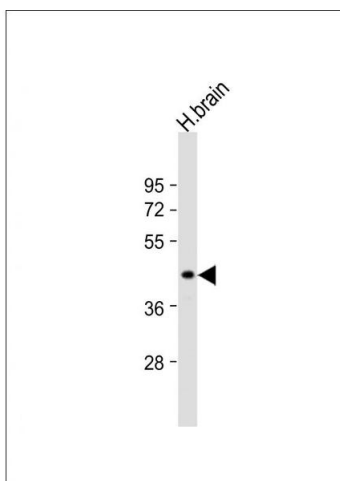
Preservative: Sodium azide

Precaution of Use: This product contains Sodium azide: a POISONOUS AND HAZARDOUS SUBSTANCE which should be handled by trained staff only.

Storage: 4 °C,-20 °C

Expiry Date: 6 months

Images



Western Blotting

Image 1. Anti-ETV1 Antibody (N-Term) at 1:1000 dilution + human brain lysates Lysates/proteins at 20 µg per lane. Secondary Goat Anti-Rabbit IgG, (H+L), Peroxidase conjugated at 1/10000 dilution Predicted band size : 55 kDa Blocking/Dilution buffer: 5 % NFDm/TBST.