

Datasheet for ABIN6242990
anti-RPS4X antibody (AA 209-243)[Go to Product page](#)

2 Images

Overview

Quantity:	200 µL
Target:	RPS4X
Binding Specificity:	AA 209-243
Reactivity:	Human, Mouse, Rat
Host:	Rabbit
Clonality:	Polyclonal
Conjugate:	This RPS4X antibody is un-conjugated
Application:	Western Blotting (WB), Flow Cytometry (FACS)

Product Details

Immunogen:	This RPS4X antibody is generated from a rabbit immunized with a KLH conjugated synthetic peptide between 209-243 amino acids from the human region of human RPS4X.
Clone:	RB56174
Isotype:	Ig Fraction
Predicted Reactivity:	B, C, Ha, X
Purification:	This antibody is purified through a protein A column, followed by peptide affinity purification.

Target Details

Target:	RPS4X
Alternative Name:	RPS4X (RPS4X Products)

Target Details

Molecular Weight: 29598

UniProt: [P62701](#)

Application Details

Application Notes: WB: 1:2000. FC: 1:25

Restrictions: For Research Use only

Handling

Format: Liquid

Buffer: Purified polyclonal antibody supplied in PBS with 0.09 % (W/V) sodium azide.

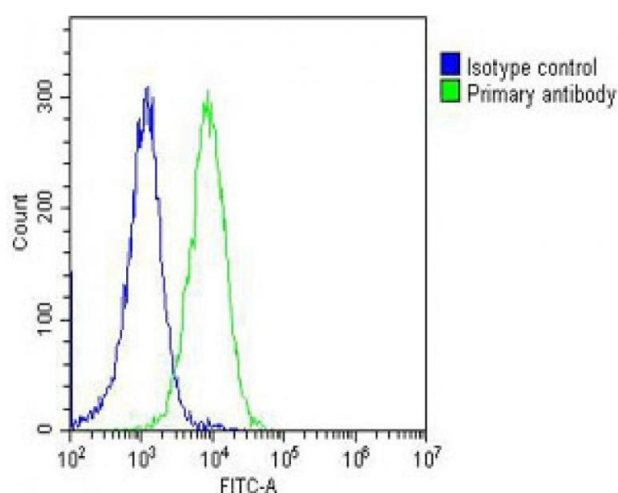
Preservative: Sodium azide

Precaution of Use: This product contains Sodium azide: a POISONOUS AND HAZARDOUS SUBSTANCE which should be handled by trained staff only.

Storage: 4 °C, -20 °C

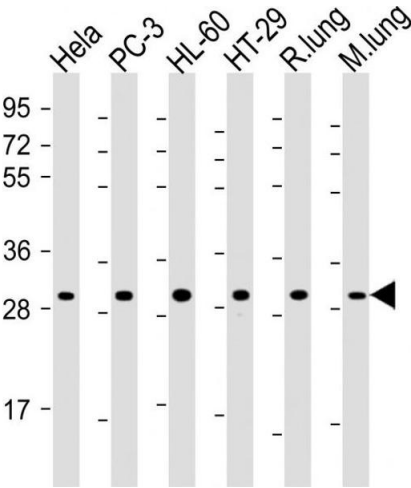
Expiry Date: 6 months

Images



Flow Cytometry

Image 1. Overlay histogram showing Hela cells stained with (ABIN6242990 and ABIN6578671) (green line). The cells were fixed with 2 % paraformaldehyde (10 min) and then permeabilized with 90 % methanol for 10 min. The cells were then incubated in 2 % bovine serum albumin to block non-specific protein-protein interactions followed by the antibody ((ABIN6242990 and ABIN6578671), 1:25 dilution) for 60 min at 37 °C. The secondary antibody used was Goat-Anti-Rabbit IgG, DyLight® 488 Conjugated Highly Cross-Adsorbed(OH191631) at 1/200 dilution for 40 min at 37 °C. Isotype control antibody (blue line) was rabbit IgG (1 µg/1x10⁶ cells) used under the same conditions. Acquisition of >10,000 events was performed.



Western Blotting

Image 2. All lanes : Anti-RPS4X Antibody (C-Term) at 1:2000 dilution Lane 1: HeLa whole cell lysate Lane 2: PC-3 whole cell lysate Lane 3: HL-60 whole cell lysate Lane 4: HT-29 whole cell lysate Lane 5: rat lung lysate Lane 6: mouse lung lysate Lysates/proteins at 20 µg per lane. Secondary Goat Anti-Rabbit IgG, (H+L), Peroxidase conjugated at 1/10000 dilution. Predicted band size : 30 kDa Blocking/Dilution buffer: 5 % NFDM/TBST.