



[Go to Product page](#)

Datasheet for ABIN6242999

anti-GIT1 antibody (C-Term, Tyr554)

4 Images

Overview

Quantity:	400 µL
Target:	GIT1
Binding Specificity:	AA 533-561, C-Term, Tyr554
Reactivity:	Human, Mouse
Host:	Rabbit
Clonality:	Polyclonal
Conjugate:	This GIT1 antibody is un-conjugated
Application:	Western Blotting (WB), Flow Cytometry (FACS)

Product Details

Immunogen:	This GIT1-Y554 antibody is generated from rabbits immunized with a KLH conjugated synthetic peptide between 533-561 amino acids from the C-terminal region of human GIT1-Y554.
Clone:	RB15351
Isotype:	Ig Fraction
Predicted Reactivity:	Rat
Purification:	This antibody is purified through a protein A column, followed by peptide affinity purification.

Target Details

Target:	GIT1
Alternative Name:	GIT1 (GIT1 Products)

Target Details

Background: GTPase-activating protein for the ADP ribosylation factor family. May serve as a scaffold to bring together molecules to form signaling modules controlling vesicle trafficking, adhesion and cytoskeletal organization. Increases the speed of cell migration, as well as the size and rate of formation of protrusions, possibly by targeting PAK1 to adhesions and the leading edge of lamellipodia. Sequesters inactive non-tyrosine-phosphorylated paxillin in cytoplasmic complexes (from SwissProt).

Molecular Weight: 84341

NCBI Accession: [NP_001078923](#), [NP_054749](#)

UniProt: [Q9Y2X7](#)

Application Details

Application Notes: WB: 1:2000. WB: 1:1000. WB: 1:1000. FC: 1:10~50

Restrictions: For Research Use only

Handling

Format: Liquid

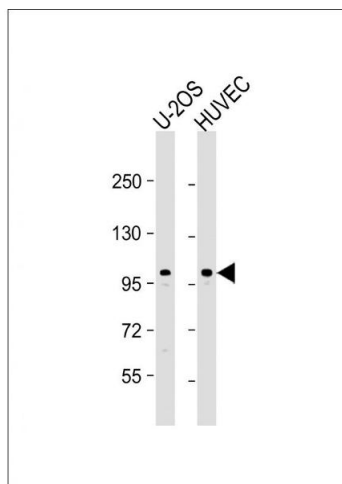
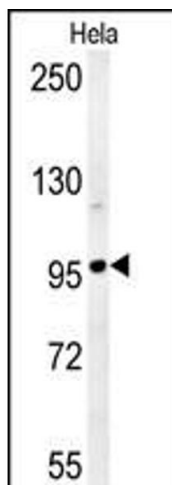
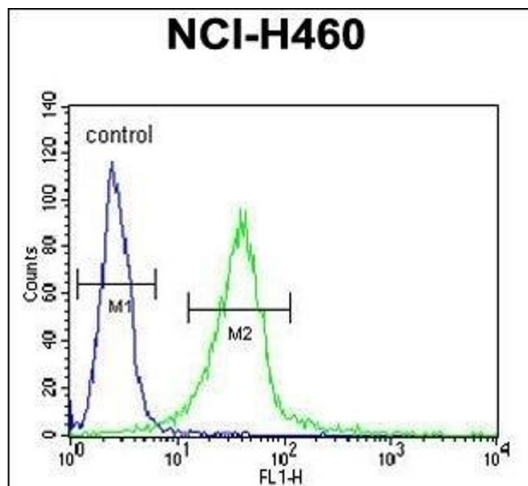
Buffer: Purified polyclonal antibody supplied in PBS with 0.09 % (W/V) sodium azide.

Preservative: Sodium azide

Precaution of Use: This product contains Sodium azide: a POISONOUS AND HAZARDOUS SUBSTANCE which should be handled by trained staff only.

Storage: 4 °C,-20 °C

Expiry Date: 6 months



Flow Cytometry

Image 1. GIT1- Antibody (C-term) (ABIN6242999 and ABIN6578994) flow cytometric analysis of NCI- cells (right histogram) compared to a negative control cell (left histogram). FITC-conjugated goat-anti-rabbit secondary antibodies were used for the analysis.

Western Blotting

Image 2. GIT1- Antibody (C-term) (ABIN6242999 and ABIN6578994) western blot analysis in HeLa cell line lysates (35 µg/lane). This demonstrates the GIT1 antibody detected the GIT1 protein (arrow).

Western Blotting

Image 3. All lanes : Anti-Phospho-GIT1-p. ctrl at 1:2000 dilution Lane 1: U-2OS whole cell lysate Lane 2: HUVEC whole cell lysate Lysates/proteins at 20 µg per lane. Secondary Goat Anti-Rabbit IgG, (H+L), Peroxidase conjugated at 1/10000 dilution. Predicted band size : 84 kDa Blocking/Dilution buffer: 5 % NFDN/TBST.

Please check the [product details page](#) for more images. Overall 4 images are available for ABIN6242999.