



[Go to Product page](#)

Datasheet for ABIN6243013
anti-ABCA2 antibody (AA 1339-1373)

1 Image

Overview

Quantity:	400 µL
Target:	ABCA2
Binding Specificity:	AA 1339-1373
Reactivity:	Human
Host:	Rabbit
Clonality:	Polyclonal
Conjugate:	This ABCA2 antibody is un-conjugated
Application:	Western Blotting (WB)

Product Details

Immunogen:	This ABCA2 antibody is generated from a rabbit immunized with a KLH conjugated synthetic peptide between 1339-1373 amino acids from the Central region of human ABCA2.
Clone:	RB51550
Isotype:	Ig Fraction
Purification:	This antibody is purified through a protein A column, followed by peptide affinity purification.

Target Details

Target:	ABCA2
Alternative Name:	ABCA2 (ABCA2 Products)
Background:	Probable transporter, its natural substrate has not been found yet. May have a role in

Target Details

macrophage lipid metabolism and neural development.

Molecular Weight: 269833

UniProt: [Q9BZC7](#)

Application Details

Application Notes: WB: 1:1000

Restrictions: For Research Use only

Handling

Format: Liquid

Buffer: Purified polyclonal antibody supplied in PBS with 0.09 % (W/V) sodium azide.

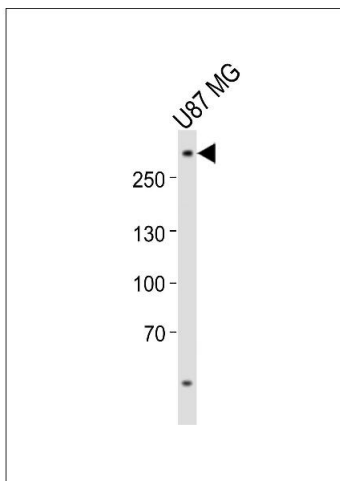
Preservative: Sodium azide

Precaution of Use: This product contains Sodium azide: a POISONOUS AND HAZARDOUS SUBSTANCE which should be handled by trained staff only.

Storage: 4 °C,-20 °C

Expiry Date: 6 months

Images



Western Blotting

Image 1. Western blot analysis of lysate from U-87 MG cell line, using ABCA2 Antibody (Center) (ABIN6243013 and ABIN6577834). (ABIN6243013 and ABIN6577834) was diluted at 1:1000. A goat anti-rabbit IgG H&L(HRP) at 1:10000 dilution was used as the secondary antibody. Lysate at 20 µg.