

Datasheet for ABIN6243058  
**anti-BAD antibody (AA 90-118)**



[Go to Product page](#)

2 Images

## Overview

Quantity:	400 µL
Target:	BAD
Binding Specificity:	AA 90-118
Reactivity:	Mouse
Host:	Rabbit
Clonality:	Polyclonal
Conjugate:	This BAD antibody is un-conjugated
Application:	Western Blotting (WB)

## Product Details

Immunogen:	This mouse BAD antibody is generated from rabbits immunized with a KLH conjugated synthetic peptide between 90-118 amino acids from the Central region of mouse BAD.
Clone:	RB39400
Isotype:	Ig Fraction
Predicted Reactivity:	Rat
Purification:	This antibody is purified through a protein A column, followed by peptide affinity purification.

## Target Details

Target:	BAD
Alternative Name:	<a href="#">BAD (BAD Products)</a>

## Target Details

---

**Background:** BAD promotes cell death. It successfully competes for the binding to Bcl-X(L), Bcl-2 and Bcl-W, thereby affecting the level of heterodimerization of these proteins with BAX. Can reverse the death repressor activity of Bcl-X(L), but not that of Bcl-2. Appears to act as a link between growth factor receptor signaling and the apoptotic pathways.

**Molecular Weight:** 22080

**NCBI Accession:** [NP\\_031548](#)

**UniProt:** [Q61337](#)

**Pathways:** [MAPK Signaling](#), [PI3K-Akt Signaling](#), [RTK Signaling](#), [Apoptosis](#), [Fc-epsilon Receptor Signaling Pathway](#), [Positive Regulation of Peptide Hormone Secretion](#), [Carbohydrate Homeostasis](#), [Positive Regulation of Endopeptidase Activity](#), [Regulation of Carbohydrate Metabolic Process](#), [Hepatitis C](#), [CXCR4-mediated Signaling Events](#)

## Application Details

---

**Application Notes:** WB: 1:1000. WB: 1:1000

**Restrictions:** For Research Use only

## Handling

---

**Format:** Liquid

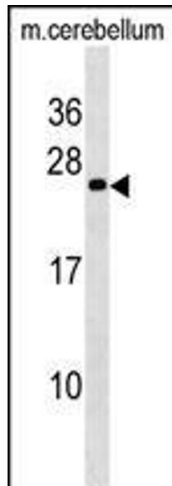
**Buffer:** Purified polyclonal antibody supplied in PBS with 0.09 % (W/V) sodium azide.

**Preservative:** Sodium azide

**Precaution of Use:** This product contains Sodium azide: a POISONOUS AND HAZARDOUS SUBSTANCE which should be handled by trained staff only.

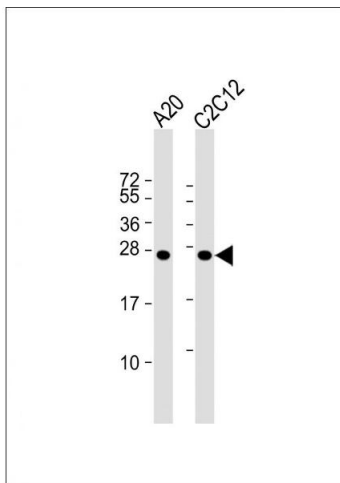
**Storage:** 4 °C, -20 °C

**Expiry Date:** 6 months



### Western Blotting

**Image 1.** Mouse BAD Antibody (Center //) (ABIN6243058 and ABIN6577363) western blot analysis in mouse cerebellum tissue lysates (35 µg/lane). This demonstrates the BAD antibody detected the BAD protein (arrow).



### Western Blotting

**Image 2.** All lanes : Anti-mouse BAD Antibody at 1:1000 dilution Lane 1: A20 whole cell lysate Lane 2: C2C12 whole cell lysate Lysates/proteins at 20 µg per lane. Secondary Goat Anti-Rabbit IgG, (H+L), Peroxidase conjugated at 1/10000 dilution. Predicted band size : 22 kDa Blocking/Dilution buffer: 5 % NFDM/TBST.