

Datasheet for ABIN6243077

**anti-RAF1 antibody (AA 599-628)**[Go to Product page](#)**3** Images

## Overview

Quantity:	400 µL
Target:	RAF1
Binding Specificity:	AA 599-628
Reactivity:	Human
Host:	Rabbit
Clonality:	Polyclonal
Conjugate:	This RAF1 antibody is un-conjugated
Application:	Western Blotting (WB), Immunohistochemistry (Paraffin-embedded Sections) (IHC (p))

## Product Details

Immunogen:	This RAF1 antibody is generated from rabbits immunized with a KLH conjugated synthetic peptide between 599-628 amino acids from human RAF1.
Clone:	RB13293
Isotype:	Ig Fraction
Predicted Reactivity:	B, C, M, Rat
Purification:	This antibody is purified through a protein A column, followed by peptide affinity purification.

## Target Details

Target:	RAF1
Alternative Name:	RAF1 ( <a href="#">RAF1 Products</a> )

## Target Details

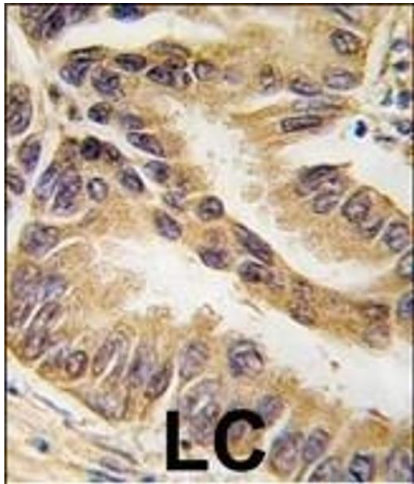
Background:	RAF1 is a MAP kinase kinase kinase (MAP3K) which functions downstream of the Ras family of membrane associated GTPases to which it binds directly. Once activated, RAF1 can phosphorylate to activate the dual specificity protein kinases MEK1 and MEK2 which in turn phosphorylate to activate the serine/threonine specific protein kinases ERK1 and ERK2. Activated ERKs are pleiotropic effectors of cell physiology and play an important role in the control of gene expression involved in the cell division cycle, apoptosis, cell differentiation and cell migration.
Molecular Weight:	73052
NCBI Accession:	<a href="#">NP_002871</a>
UniProt:	<a href="#">P04049</a>
Pathways:	<a href="#">MAPK Signaling</a> , <a href="#">RTK Signaling</a> , <a href="#">Fc-epsilon Receptor Signaling Pathway</a> , <a href="#">Neurotrophin Signaling Pathway</a> , <a href="#">cAMP Metabolic Process</a> , <a href="#">Stem Cell Maintenance</a> , <a href="#">Hepatitis C</a> , <a href="#">Autophagy</a> , <a href="#">Signaling of Hepatocyte Growth Factor Receptor</a> , <a href="#">VEGF Signaling</a> , <a href="#">BCR Signaling</a>

## Application Details

Application Notes:	WB: 1:1000. WB: 1:1000. IHC-P: 1:10~50
Restrictions:	For Research Use only

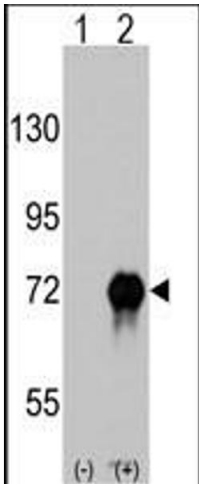
## Handling

Format:	Liquid
Buffer:	Purified polyclonal antibody supplied in PBS with 0.09 % (W/V) sodium azide.
Preservative:	Sodium azide
Precaution of Use:	This product contains Sodium azide: a POISONOUS AND HAZARDOUS SUBSTANCE which should be handled by trained staff only.
Storage:	4 °C, -20 °C
Expiry Date:	6 months



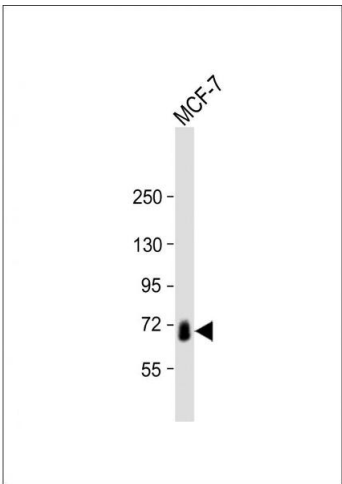
**Immunohistochemistry (Paraffin-embedded Sections)**

**Image 1.** Formalin-fixed and paraffin-embedded human lung carcinoma tissue reacted with RAF1-p, which was peroxidase-conjugated to the secondary antibody, followed by DAB staining. This data demonstrates the use of this antibody for immunohistochemistry, clinical relevance has not been evaluated.



**Western Blotting**

**Image 2.** Western blot analysis of RAF1 (arrow) using rabbit polyclonal RAF1 Antibody (ABIN6243077 and ABIN6579013). 293 cell lysates (2 µg/lane) either nontransfected (Lane 1) or transiently transfected with the RAF1 gene (Lane 2) (Origene Technologies).



**Western Blotting**

**Image 3.** Anti-RAF1 Antibody at 1:1000 dilution + MCF-7 whole cell lysate Lysates/proteins at 20 µg per lane. Secondary Goat Anti-Rabbit IgG, (H+L), Peroxidase conjugated at 1/10000 dilution. Predicted band size : 73 kDa Blocking/Dilution buffer: 5 % NFDM/TBST.