

Datasheet for ABIN6243108  
**anti-CHRM1 antibody (C-Term)**[Go to Product page](#)

## 1 Image

## Overview

Quantity:	400 µL
Target:	CHRM1
Binding Specificity:	AA 331-367, C-Term
Reactivity:	Mouse
Host:	Rabbit
Clonality:	Polyclonal
Conjugate:	This CHRM1 antibody is un-conjugated
Application:	Western Blotting (WB)

## Product Details

Immunogen:	This CHRM1 antibody is generated from a rabbit immunized with a KLH conjugated synthetic peptide between 331-367 amino acids from the C-terminal region of human CHRM1.
Clone:	RB51455
Isotype:	Ig Fraction
Purification:	This antibody is purified through a protein A column, followed by peptide affinity purification.

## Target Details

Target:	CHRM1
Alternative Name:	CHRM1 ( <a href="#">CHRM1 Products</a> )
Background:	The muscarinic acetylcholine receptor mediates various cellular responses, including inhibition

## Target Details

of adenylate cyclase, breakdown of phosphoinositides and modulation of potassium channels through the action of G proteins. Primary transducing effect is Pi turnover.

Molecular Weight: 51421

UniProt: [P11229](#)

Pathways: [Synaptic Membrane](#)

## Application Details

Application Notes: WB: 1:1000

Restrictions: For Research Use only

## Handling

Format: Liquid

Buffer: Purified polyclonal antibody supplied in PBS with 0.09 % (W/V) sodium azide.

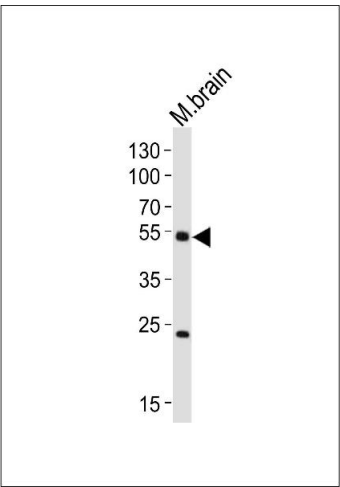
Preservative: Sodium azide

Precaution of Use: This product contains Sodium azide: a POISONOUS AND HAZARDOUS SUBSTANCE which should be handled by trained staff only.

Storage: 4 °C, -20 °C

Expiry Date: 6 months

## Images



### Western Blotting

**Image 1.** Western blot analysis of lysate from mouse brain tissue lysate, using CHRM1 Antibody (C-term) (ABIN6243108 and ABIN6577871). (ABIN6243108 and ABIN6577871) was diluted at 1:1000. A goat anti-rabbit IgG H&L(HRP) at 1:10000 dilution was used as the secondary antibody. Lysate at 20 µg.