



[Go to Product page](#)

Datasheet for ABIN6243112
anti-CIDEB antibody (AA 150-183)

1 Image

Overview

Quantity:	200 µL
Target:	CIDEB
Binding Specificity:	AA 150-183
Reactivity:	Human
Host:	Rabbit
Clonality:	Polyclonal
Conjugate:	This CIDEB antibody is un-conjugated
Application:	Western Blotting (WB)

Product Details

Immunogen:	This CIDEB antibody is generated from a rabbit immunized with a KLH conjugated synthetic peptide between 150-183 amino acids from human CIDEB.
Clone:	RB53999
Isotype:	Ig Fraction
Purification:	This antibody is purified through a protein A column, followed by peptide affinity purification.

Target Details

Target:	CIDEB
Alternative Name:	CIDEB (CIDEB Products)
Background:	Activates apoptosis.

Target Details

UniProt: [Q9UHD4](#)

Application Details

Application Notes: WB: 1:2000

Restrictions: For Research Use only

Handling

Format: Liquid

Buffer: Purified polyclonal antibody supplied in PBS with 0.09 % (W/V) sodium azide.

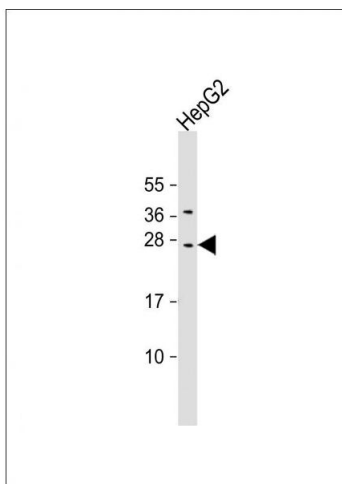
Preservative: Sodium azide

Precaution of Use: This product contains Sodium azide: a POISONOUS AND HAZARDOUS SUBSTANCE which should be handled by trained staff only.

Storage: 4 °C,-20 °C

Expiry Date: 6 months

Images



Western Blotting

Image 1. Anti-CIDEB Antibody (C-erm) at 1:2000 dilution + HepG2 whole cell lysate Lysates/proteins at 20 µg per lane. Secondary Goat Anti-Rabbit IgG, (H+L), Peroxidase conjugated at 1/10000 dilution. Predicted band size : 25 kDa
Blocking/Dilution buffer: 5 % NFD/MTBST.