

Datasheet for ABIN6243137
anti-Cofilin 2 antibody (C-Term)[Go to Product page](#)

2 Images

Overview

Quantity:	400 µL
Target:	Cofilin 2 (CFL2)
Binding Specificity:	AA 130-144, C-Term
Reactivity:	Human, Mouse
Host:	Rabbit
Clonality:	Polyclonal
Conjugate:	This Cofilin 2 antibody is un-conjugated
Application:	Western Blotting (WB), Immunofluorescence (IF)

Product Details

Immunogen:	This CFL2 antibody is generated from a rabbit immunized with a KLH conjugated synthetic peptide between 130-144 amino acids from the C-terminal region of human CFL2.
Clone:	RB48609
Isotype:	Ig Fraction
Predicted Reactivity:	B, C, Pig, X
Purification:	This antibody is purified through a protein A column, followed by peptide affinity purification.

Target Details

Target:	Cofilin 2 (CFL2)
Alternative Name:	CFL2 (CFL2 Products)

Target Details

Background:	Controls reversibly actin polymerization and depolymerization in a pH -sensitive manner. It has the ability to bind G- and F-actin in a 1:1 ratio of cofilin to actin. It is the major component of intranuclear and cytoplasmic actin rods (By similarity).
Molecular Weight:	18737
UniProt:	Q9Y281
Pathways:	Caspase Cascade in Apoptosis

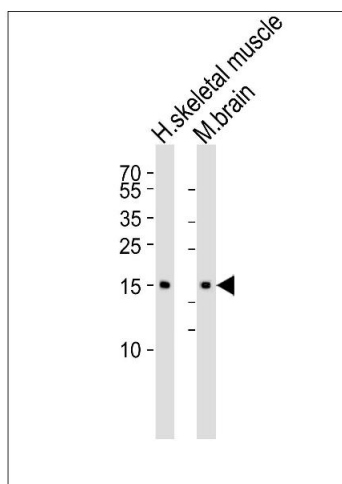
Application Details

Application Notes:	IF: 1:25. WB: 1:1000
Restrictions:	For Research Use only

Handling

Format:	Liquid
Buffer:	Purified polyclonal antibody supplied in PBS with 0.09 % (W/V) sodium azide.
Preservative:	Sodium azide
Precaution of Use:	This product contains Sodium azide: a POISONOUS AND HAZARDOUS SUBSTANCE which should be handled by trained staff only.
Storage:	4 °C,-20 °C
Expiry Date:	6 months

Images



Western Blotting

Image 1. Western blot analysis of lysates from human skeletal muscle and mouse brain tissue lysate (from left to right), using CFL2 Antibody (C-term) (ABIN6243137 and ABIN6577407). (ABIN6243137 and ABIN6577407) was diluted at 1:1000 at each lane. A goat anti-rabbit IgG H&L(HRP) at 1:5000 dilution was used as the secondary antibody. Lysates at 35 µg per lane.



Immunofluorescence

Image 2. Fluorescent image of HeLa cells stained with CFL2 Antibody (C-term) (ABIN6243137 and ABIN6577407). (ABIN6243137 and ABIN6577407) was diluted at 1:25 dilution. An Alexa Fluor 488-conjugated goat anti-rabbit IgG at 1:400 dilution was used as the secondary antibody (green). Cytoplasmic actin was counterstained with Alexa Fluor® 555 conjugated with Phalloidin (red).