

Datasheet for ABIN6243157
anti-DLG1 antibody (AA 643-673)[Go to Product page](#)

1 Image

Overview

Quantity:	200 µL
Target:	DLG1
Binding Specificity:	AA 643-673
Reactivity:	Human
Host:	Rabbit
Clonality:	Polyclonal
Conjugate:	This DLG1 antibody is un-conjugated
Application:	Western Blotting (WB)

Product Details

Immunogen:	This DLG1 antibody is generated from a rabbit immunized with a KLH conjugated synthetic peptide between 643-673 amino acids from the Central region of human DLG1.
Clone:	RB53955
Isotype:	Ig Fraction
Purification:	This antibody is purified through a protein A column, followed by peptide affinity purification.

Target Details

Target:	DLG1
Alternative Name:	DLG1 (DLG1 Products)
Background:	Essential multidomain scaffolding protein required for normal development (By similarity).

Target Details

Recruits channels, receptors and signaling molecules to discrete plasma membrane domains in polarized cells. May play a role in adherens junction assembly, signal transduction, cell proliferation, synaptogenesis and lymphocyte activation. Regulates the excitability of cardiac myocytes by modulating the functional expression of Kv4 channels. Functional regulator of Kv1.5 channel.

Molecular Weight: 100455

UniProt: [Q12959](#)

Pathways: [Regulation of Actin Filament Polymerization](#), [Cell-Cell Junction Organization](#), [Production of Molecular Mediator of Immune Response](#)

Application Details

Application Notes: WB: 1:2000

Restrictions: For Research Use only

Handling

Format: Liquid

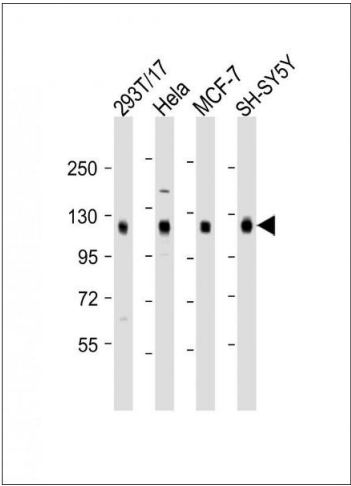
Buffer: Purified polyclonal antibody supplied in PBS with 0.09 % (W/V) sodium azide.

Preservative: Sodium azide

Precaution of Use: This product contains Sodium azide: a POISONOUS AND HAZARDOUS SUBSTANCE which should be handled by trained staff only.

Storage: 4 °C,-20 °C

Expiry Date: 6 months



Western Blotting

Image 1. All lanes : Anti-DLG1 Antibody (Center) at 1:2000 dilution Lane 1: 293T/17 whole cell lysate Lane 2: HeLa whole cell lysate Lane 3: MCF-7 whole cell lysate Lane 4: SH-SY5Y whole cell lysate Lysates/proteins at 20 µg per lane. Secondary Goat Anti-Rabbit IgG, (H+L), Peroxidase conjugated at 1/10000 dilution. Predicted band size : 100 kDa Blocking/Dilution buffer: 5 % NFDM/TBST.