



[Go to Product page](#)

Datasheet for ABIN6243197  
**anti-EHD2 antibody (C-Term)**

4 Images

Overview

Quantity:	400 µL
Target:	EHD2
Binding Specificity:	AA 415-449, C-Term
Reactivity:	Human, Mouse, Rat
Host:	Rabbit
Clonality:	Polyclonal
Conjugate:	This EHD2 antibody is un-conjugated
Application:	Western Blotting (WB), Immunohistochemistry (Paraffin-embedded Sections) (IHC (p))

Product Details

Immunogen:	This EHD2 antibody is generated from a rabbit immunized with a KLH conjugated synthetic peptide between 415-449 amino acids from the C-terminal region of human EHD2.
Clone:	RB51848
Isotype:	Ig Fraction
Purification:	This antibody is purified through a protein A column, followed by peptide affinity purification.

Target Details

Target:	EHD2
Alternative Name:	<a href="#">EHD2 (EHD2 Products)</a>
Background:	Plays a role in membrane reorganization in response to nucleotide hydrolysis. Binds to

## Target Details

---

liposomes and deforms them into tubules. Plays a role in membrane trafficking between the plasma membrane and endosomes. Important for the internalization of GLUT4. Required for normal fusion of myoblasts to skeletal muscle myotubes. Required for translocation of FER1L5 to the plasma membrane. Binds ATP, does not bind GTP (By similarity).

Molecular Weight: 61161

UniProt: [Q9NZN4](#)

Pathways: [Regulation of Muscle Cell Differentiation, Skeletal Muscle Fiber Development](#)

## Application Details

---

Application Notes: WB: 1:1000. WB: 1:500-1:2000. IHC-P-Leica: 1:500. IHC-P-Leica: 1:500

Restrictions: For Research Use only

## Handling

---

Format: Liquid

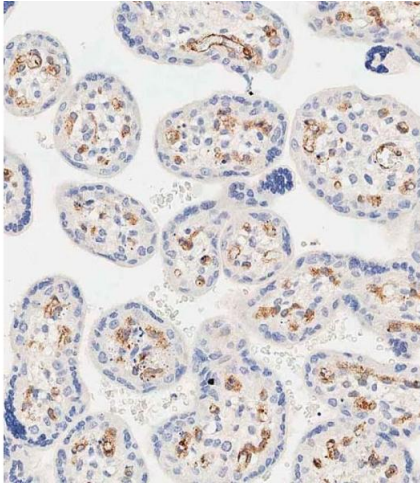
Buffer: Purified polyclonal antibody supplied in PBS with 0.09 % (W/V) sodium azide.

Preservative: Sodium azide

Precaution of Use: This product contains Sodium azide: a POISONOUS AND HAZARDOUS SUBSTANCE which should be handled by trained staff only.

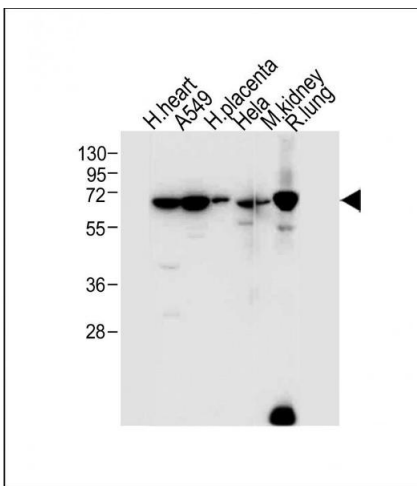
Storage: 4 °C,-20 °C

Expiry Date: 6 months



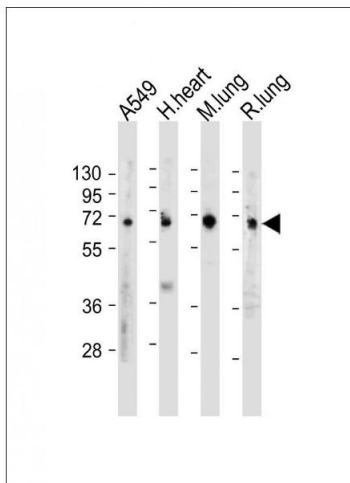
### Immunohistochemistry (Paraffin-embedded Sections)

**Image 1.** Immunohistochemical analysis of paraffin-embedded human placenta tissue using A performed on the Leica® BOND RXm. Tissue was fixed with formaldehyde at room temperature, antigen retrieval was by heat mediation with a EDTA buffer (pH 9.0). Samples were incubated with primary Antibody (1:500) for 1 hours at room temperature. A undiluted biotinylated CRF Anti-Polyvalent HRP Polymer antibody was used as the secondary antibody.



### Western Blotting

**Image 2.** All lanes : Anti-EHD2 Antibody (C-term) at 1:1000 dilution Lane 1: Human heart tissue lysate Lane 2: A549 whole cell lysate Lane 3: Human placenta tissue lysate Lane 4: HeLa whole cell lysate Lane 5: Mouse kidney tissue lysate Lane 6: Rat lung tissue lysate Lysates/proteins at 20 µg per lane. Secondary Goat Anti-Rabbit IgG, (H+L), Peroxidase conjugated at 1/10000 dilution. Predicted band size : 61 kDa Blocking/Dilution buffer: 5 % NFDm/TBST.



### Western Blotting

**Image 3.** All lanes : Anti-EHD2 Antibody (C-term) at 1:500-1:2000 dilution Lane 1: A549 whole cell lysate Lane 2: Human heart tissue lysate Lane 3: Mouse lung tissue lysate Lane 4: Rat lung tissue lysate Lysates/proteins at 20 µg per lane. Secondary Goat Anti-Rabbit IgG, (H+L), Peroxidase conjugated at 1/10000 dilution. Predicted band size : 61 kDa Blocking/Dilution buffer: 5 % NFDm/TBST.

Please check the [product details page](#) for more images. Overall 4 images are available for ABIN6243197.