

Datasheet for ABIN6243201
anti-MAPK12 antibody (AA 319-353)[Go to Product page](#)

1 Image

Overview

Quantity:	400 µL
Target:	MAPK12
Binding Specificity:	AA 319-353
Reactivity:	Zebrafish (Danio rerio)
Host:	Rabbit
Clonality:	Polyclonal
Conjugate:	This MAPK12 antibody is un-conjugated
Application:	Western Blotting (WB)

Product Details

Immunogen:	This (DANRE) mapk12 antibody is generated from a rabbit immunized with a KLH conjugated synthetic peptide between 319-353 amino acids of DANRE mapk12.
Clone:	RB47232
Isotype:	IgG
Purification:	This antibody is purified through a protein A column, followed by peptide affinity purification.

Target Details

Target:	MAPK12
Alternative Name:	mapk12 (MAPK12 Products)
Background:	Serine/threonine kinase which acts as an essential component of the MAP kinase signal

Target Details

transduction pathway. MAPK12 is one of the four p38 MAPKs which play an important role in the cascades of cellular responses evoked by extracellular stimuli such as proinflammatory cytokines or physical stress leading to direct activation of transcription factors. Accordingly, p38 MAPKs phosphorylate a broad range of proteins and it has been estimated that they may have approximately 200 to 300 substrates each. Some of the targets are downstream kinases such as MAPKAPK2, which are activated through phosphorylation and further phosphorylate additional targets (By similarity).

Molecular Weight: 41971

UniProt: [O42376](#)

Pathways: [MAPK Signaling](#), [Neurotrophin Signaling Pathway](#), [Regulation of Muscle Cell Differentiation](#), [Hepatitis C](#), [BCR Signaling](#), [S100 Proteins](#)

Application Details

Application Notes: WB: 1:1000

Restrictions: For Research Use only

Handling

Format: Liquid

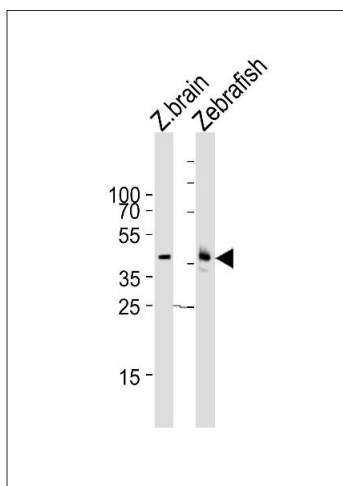
Buffer: Purified polyclonal antibody supplied in PBS with 0.09 % (W/V) sodium azide.

Preservative: Sodium azide

Precaution of Use: This product contains Sodium azide: a POISONOUS AND HAZARDOUS SUBSTANCE which should be handled by trained staff only.

Storage: 4 °C, -20 °C

Expiry Date: 6 months



Western Blotting

Image 1. Western blot analysis of lysates from zebra fish brain, Zebrafish tissue lysate (from left to right), using (DANRE) mapk12 Antibody (C-term) Azb18716c. Azb18716c was diluted at 1:1000 at each lane. A goat anti-rabbit IgG H&L(HRP) at 1:10000 dilution was used as the secondary antibody. Lysates at 35 µg per lane.