

Datasheet for ABIN6243206
anti-GAB1 antibody (AA 250-285)[Go to Product page](#)

1 Image

Overview

| | |
|----------------------|-------------------------------------|
| Quantity: | 400 µL |
| Target: | GAB1 |
| Binding Specificity: | AA 250-285 |
| Reactivity: | Human |
| Host: | Rabbit |
| Clonality: | Polyclonal |
| Conjugate: | This GAB1 antibody is un-conjugated |
| Application: | Western Blotting (WB) |

Product Details

| | |
|---------------|--|
| Immunogen: | This antibody is generated from a rabbit immunized with a KLH conjugated synthetic peptide between 250-285 amino acids from human. |
| Clone: | RB47324 |
| Isotype: | IgG |
| Purification: | This antibody is purified through a protein A column, followed by peptide affinity purification. |

Target Details

| | |
|-------------------|--|
| Target: | GAB1 |
| Alternative Name: | GAB1 (GAB1 Products) |
| Background: | Adapter protein that plays a role in intracellular signaling cascades triggered by activated |

Target Details

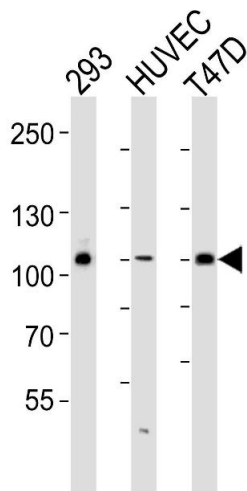
| | |
|-------------------|---|
| | receptor-type kinases. Plays a role in FGFR1 signaling. Probably involved in signaling by the epidermal growth factor receptor (EGFR) and the insulin receptor (INSR). |
| Molecular Weight: | 76616 |
| UniProt: | Q13480 |
| Pathways: | RTK Signaling , Signaling Events mediated by VEGFR1 and VEGFR2 , Platelet-derived growth Factor Receptor Signaling , Signaling of Hepatocyte Growth Factor Receptor , VEGFR1 Specific Signals |

Application Details

| | |
|--------------------|-----------------------|
| Application Notes: | WB: 1:1000 |
| Restrictions: | For Research Use only |

Handling

| | |
|--------------------|--|
| Format: | Liquid |
| Buffer: | Purified polyclonal antibody supplied in PBS with 0.09 % (W/V) sodium azide. |
| Preservative: | Sodium azide |
| Precaution of Use: | This product contains Sodium azide: a POISONOUS AND HAZARDOUS SUBSTANCE which should be handled by trained staff only. |
| Storage: | 4 °C,-20 °C |
| Expiry Date: | 6 months |



Western Blotting

Image 1. Western blot analysis of lysates from 293, HUVEC, T47D cell line (from left to right), using HUN-GAB1 (ABIN6243206 and ABIN6577498). (ABIN6243206 and ABIN6577498) was diluted at 1:1000 at each lane. A goat anti-rabbit IgG H&L(HRP) at 1:5000 dilution was used as the secondary antibody. Lysates at 35 µg per lane.