

Datasheet for ABIN6243209
anti-GIT2 antibody (C-Term)[Go to Product page](#)

1 Image

Overview

Quantity:	400 µL
Target:	GIT2
Binding Specificity:	AA 714-749, C-Term
Reactivity:	Human
Host:	Rabbit
Clonality:	Polyclonal
Conjugate:	This GIT2 antibody is un-conjugated
Application:	Western Blotting (WB)

Product Details

Immunogen:	This GIT2 antibody is generated from a rabbit immunized with a KLH conjugated synthetic peptide between 714-749 amino acids from the C-terminal region of human GIT2.
Clone:	RB48356
Isotype:	Ig Fraction
Purification:	This antibody is purified through a protein A column, followed by peptide affinity purification.

Target Details

Target:	GIT2
Alternative Name:	GIT2 (GIT2 Products)
Background:	GTPase-activating protein for the ADP ribosylation factor family.

Target Details

Molecular Weight:	84543
UniProt:	Q14161
Pathways:	Regulation of G-Protein Coupled Receptor Protein Signaling

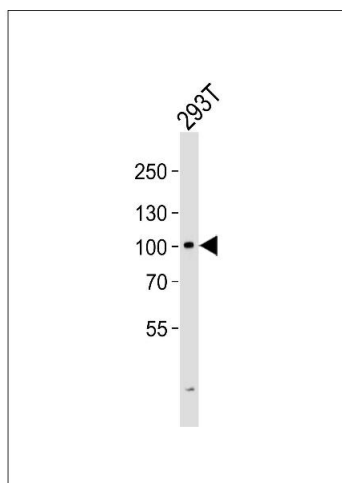
Application Details

Application Notes:	WB: 1:1000
Restrictions:	For Research Use only

Handling

Format:	Liquid
Buffer:	Purified polyclonal antibody supplied in PBS with 0.09 % (W/V) sodium azide.
Preservative:	Sodium azide
Precaution of Use:	This product contains Sodium azide: a POISONOUS AND HAZARDOUS SUBSTANCE which should be handled by trained staff only.
Storage:	4 °C,-20 °C
Expiry Date:	6 months

Images



Western Blotting

Image 1. Western blot analysis of lysate from 293T cell line, using GIT2 Antibody (C-term) (ABIN6243209 and ABIN6577418). (ABIN6243209 and ABIN6577418) was diluted at 1:1000. A goat anti-rabbit IgG H&L(HRP) at 1:5000 dilution was used as the secondary antibody. Lysate at 35 µg.