



[Go to Product page](#)

Datasheet for ABIN6243214
anti-GMPPB antibody (AA 129-162)

1 Image

Overview

Quantity:	200 µL
Target:	GMPPB
Binding Specificity:	AA 129-162
Reactivity:	Mouse
Host:	Rabbit
Clonality:	Polyclonal
Conjugate:	This GMPPB antibody is un-conjugated
Application:	Western Blotting (WB)

Product Details

Immunogen:	This GMPPB antibody is generated from a rabbit immunized with a KLH conjugated synthetic peptide between 129-162 amino acids from the Central region of human GMPPB.
Clone:	RB55062
Isotype:	Ig Fraction
Predicted Reactivity:	Pig
Purification:	This antibody is purified through a protein A column, followed by peptide affinity purification.

Target Details

Target:	GMPPB
Alternative Name:	GMPPB (GMPPB Products)

Target Details

Molecular Weight: 39834

UniProt: [Q9Y5P6](#)

Application Details

Application Notes: WB: 1:4000

Restrictions: For Research Use only

Handling

Format: Liquid

Buffer: Purified polyclonal antibody supplied in PBS with 0.09 % (W/V) sodium azide.

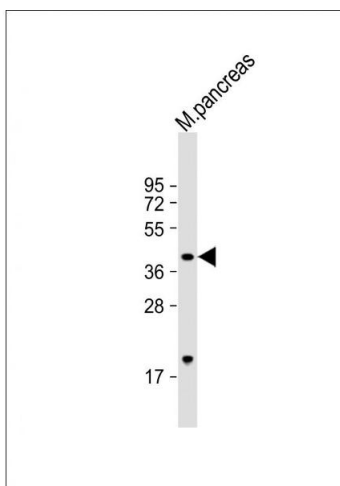
Preservative: Sodium azide

Precaution of Use: This product contains Sodium azide: a POISONOUS AND HAZARDOUS SUBSTANCE which should be handled by trained staff only.

Storage: 4 °C, -20 °C

Expiry Date: 6 months

Images



Western Blotting

Image 1. Anti-GPB Antibody (Center) at 1:4000 dilution + mouse pancreas lysate Lysates/proteins at 20 µg per lane. Secondary Goat Anti-Rabbit IgG, (H+L), Peroxidase conjugated at 1/10000 dilution. Predicted band size : 40 kDa
Blocking/Dilution buffer: 5 % NFDM/TBST.