

Datasheet for ABIN6243235
anti-INSRR antibody (AA 668-702)



[Go to Product page](#)

1 Image

Overview

Quantity:	400 µL
Target:	INSRR
Binding Specificity:	AA 668-702
Reactivity:	Human
Host:	Rabbit
Clonality:	Polyclonal
Conjugate:	This INSRR antibody is un-conjugated
Application:	Western Blotting (WB)

Product Details

Immunogen:	This INSRR antibody is generated from a rabbit immunized with a KLH conjugated synthetic peptide between 668-702 amino acids from the Central region of human INSRR.
Clone:	RB50837
Isotype:	Ig Fraction

Target Details

Target:	INSRR
Alternative Name:	INSRR (INSRR Products)
Background:	Receptor with tyrosine-protein kinase activity. Functions as a pH sensing receptor which is activated by increased extracellular pH . Activates an intracellular signaling pathway that involves IRS1 and AKT1/PKB.

Target Details

Molecular Weight: 143720

UniProt: [P14616](#)

Pathways: [RTK Signaling](#)

Application Details

Application Notes: WB: 1:4000

Restrictions: For Research Use only

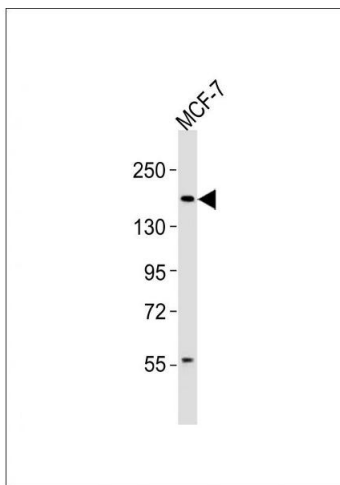
Handling

Format: Liquid

Storage: 4 °C,-20 °C

Expiry Date: 6 months

Images



Western Blotting

Image 1. Anti-INSRR Antibody (Center) at 1:4000 dilution + MCF-7 whole cell lysates Lysates/proteins at 20 µg per lane. Secondary Goat Anti-Rabbit IgG, (H+L), Peroxidase conjugated at 1/10000 dilution Predicted band size : 144 kDa Blocking/Dilution buffer: 5 % NFDm/TBST.