

Datasheet for ABIN6243236  
**anti-INSRR antibody (C-Term)**[Go to Product page](#)

## 1 Image

## Overview

Quantity:	400 µL
Target:	INSRR
Binding Specificity:	AA 1265-1295, C-Term
Reactivity:	Rat
Host:	Rabbit
Clonality:	Polyclonal
Conjugate:	This INSRR antibody is un-conjugated
Application:	Western Blotting (WB)

## Product Details

Immunogen:	This Mouse Insrr antibody is generated from a rabbit immunized with a KLH conjugated synthetic peptide between 1265-1295 amino acids from the C-terminal region of Mouse Insrr.
Clone:	RB50476
Isotype:	Ig Fraction
Purification:	This antibody is purified through a protein A column, followed by peptide affinity purification.

## Target Details

Target:	INSRR
Alternative Name:	Insrr ( <a href="#">INSRR Products</a> )
Background:	Receptor with tyrosine-protein kinase activity. Functions as a pH sensing receptor which is

## Target Details

activated by increased extracellular pH . Activates an intracellular signaling pathway that involves IRS1 and AKT1/PKB.

Molecular Weight: 144875

UniProt: [Q9WTL4](#)

Pathways: [RTK Signaling](#)

## Application Details

Application Notes: WB: 1:1000

Restrictions: For Research Use only

## Handling

Format: Liquid

Buffer: Purified polyclonal antibody supplied in PBS with 0.09 % (W/V) sodium azide.

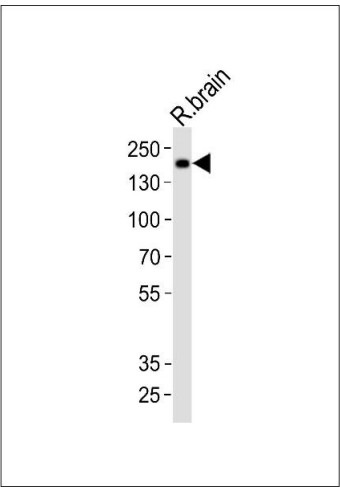
Preservative: Sodium azide

Precaution of Use: This product contains Sodium azide: a POISONOUS AND HAZARDOUS SUBSTANCE which should be handled by trained staff only.

Storage: 4 °C,-20 °C

Expiry Date: 6 months

## Images



### Western Blotting

**Image 1.** Western blot analysis of lysate from rat brain tissue, using Mouse Insrr Antibody (C-term) (ABIN6243236 and ABIN6577628). (ABIN6243236 and ABIN6577628) was diluted at 1:1000. A goat anti-rabbit IgG H&L(HRP) at 1:10000 dilution was used as the secondary antibody. Lysate at 20 µg.