

Datasheet for ABIN6243241
anti-INSM2 antibody (AA 192-227)[Go to Product page](#)

1 Image

Overview

Quantity:	400 µL
Target:	INSM2
Binding Specificity:	AA 192-227
Reactivity:	Human
Host:	Rabbit
Clonality:	Polyclonal
Conjugate:	This INSM2 antibody is un-conjugated
Application:	Western Blotting (WB)

Product Details

Immunogen:	This INSM2 antibody is generated from a rabbit immunized with a KLH conjugated synthetic peptide between 192-227 amino acids from the Central region of human INSM2.
Clone:	RB49258
Isotype:	Ig Fraction
Purification:	This antibody is purified through a protein A column, followed by peptide affinity purification.

Target Details

Target:	INSM2
Alternative Name:	INSM2 (INSM2 Products)
Background:	May function as a growth suppressor or tumor suppressor in liver cells and in certain neurons.

Target Details

Molecular Weight:	59491
UniProt:	Q96T92

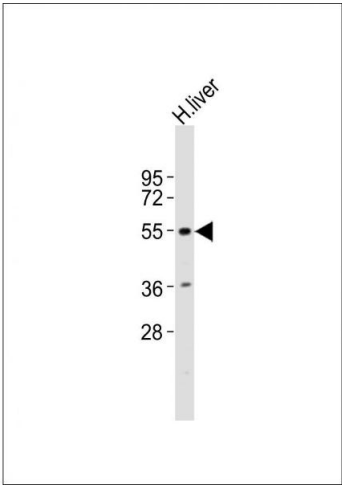
Application Details

Application Notes:	WB: 1:1000
Restrictions:	For Research Use only

Handling

Format:	Liquid
Buffer:	Purified polyclonal antibody supplied in PBS with 0.09 % (W/V) sodium azide.
Preservative:	Sodium azide
Precaution of Use:	This product contains Sodium azide: a POISONOUS AND HAZARDOUS SUBSTANCE which should be handled by trained staff only.
Storage:	4 °C,-20 °C
Expiry Date:	6 months

Images



Western Blotting

Image 1. Anti-INSM2 Antibody (Center) at 1:1000 dilution + human liver lysates. Lysates/proteins at 20 µg per lane. Secondary: Goat Anti-Rabbit IgG, (H+L), Peroxidase conjugated at 1/10000 dilution. Predicted band size: 59 kDa. Blocking/Dilution buffer: 5 % NFDM/TBST.