

Datasheet for ABIN6243246
anti-LMCD1 antibody (C-Term)[Go to Product page](#)

1 Image

Overview

Quantity:	400 µL
Target:	LMCD1
Binding Specificity:	AA 316-350, C-Term
Reactivity:	Human, Mouse, Rat
Host:	Rabbit
Clonality:	Polyclonal
Conjugate:	This LMCD1 antibody is un-conjugated
Application:	Western Blotting (WB)

Product Details

Immunogen:	This LMCD1 antibody is generated from a rabbit immunized with a KLH conjugated synthetic peptide between 316-350 amino acids from the C-terminal region of human LMCD1.
Clone:	RB40473
Isotype:	Ig Fraction
Purification:	This antibody is purified through a protein A column, followed by peptide affinity purification.

Target Details

Target:	LMCD1
Alternative Name:	LMCD1 (LMCD1 Products)
Background:	Transcriptional cofactor that restricts GATA6 function by inhibiting DNA-binding, resulting in

Target Details

repression of GATA6 transcriptional activation of downstream target genes. Represses GATA6-mediated trans activation of lung- and cardiac tissue- specific promoters. Inhibits DNA-binding by GATA4 and GATA1 to the cTNC promoter (By similarity). Plays a critical role in the development of cardiac hypertrophy via activation of calcineurin/nuclear factor of activated T-cells signaling pathway.

Molecular Weight: 40833

UniProt: [Q9NZU5](#)

Application Details

Application Notes: WB: 1:1000

Restrictions: For Research Use only

Handling

Format: Liquid

Buffer: Purified polyclonal antibody supplied in PBS with 0.09 % (W/V) sodium azide.

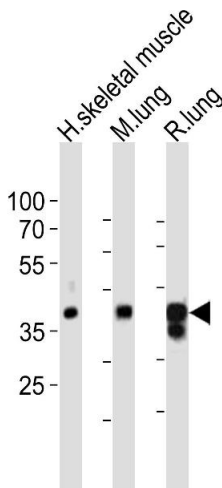
Preservative: Sodium azide

Precaution of Use: This product contains Sodium azide: a POISONOUS AND HAZARDOUS SUBSTANCE which should be handled by trained staff only.

Storage: 4 °C,-20 °C

Expiry Date: 6 months

Images



Western Blotting

Image 1. Western blot analysis of lysates from human skeletal muscle, mouse lung, rat lung tissue lysate (from left to right), using LMCD1 Antibody (C-term) (ABIN6243246 and ABIN6577875). (ABIN6243246 and ABIN6577875) was diluted at 1:1000 at each lane. A goat anti-rabbit IgG H&L(HRP) at 1:10000 dilution was used as the secondary antibody. Lysates at 20 µg per lane.