

Datasheet for ABIN6243247  
**anti-LITAF antibody (AA 31-60)**[Go to Product page](#)

## 1 Image

## Overview

Quantity:	50 µL
Target:	LITAF
Binding Specificity:	AA 31-60
Reactivity:	Human
Host:	Rabbit
Clonality:	Polyclonal
Conjugate:	This LITAF antibody is un-conjugated
Application:	Western Blotting (WB)

## Product Details

Immunogen:	This LITAF antibody is generated from a rabbit immunized with a KLH conjugated synthetic peptide between 31-60 amino acids from the human LITAF.
Clone:	RB54510
Isotype:	Ig Fraction
Predicted Reactivity:	M, Rat
Purification:	This antibody is purified through a protein A column, followed by peptide affinity purification.

## Target Details

Target:	LITAF
Alternative Name:	LITAF ( <a href="#">LITAF Products</a> )

## Target Details

Background:	Probable role in regulating transcription of specific genes. May regulate through NFKB1 the expression of the CCL2/MCP-1 chemokine. May play a role in tumor necrosis factor alpha (TNF- alpha) gene expression.
Molecular Weight:	17107
UniProt:	<a href="#">Q99732</a>
Pathways:	<a href="#">Cellular Response to Molecule of Bacterial Origin</a>

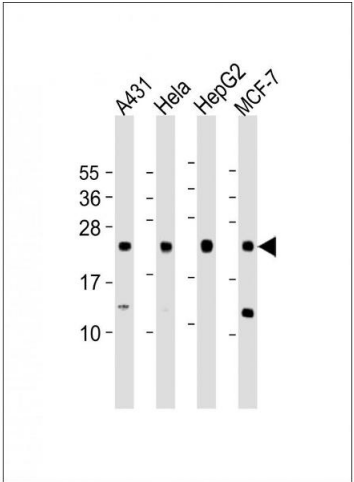
## Application Details

Application Notes:	WB: 1:1000
Restrictions:	For Research Use only

## Handling

Format:	Liquid
Buffer:	Purified polyclonal antibody supplied in PBS with 0.09 % (W/V) sodium azide.
Preservative:	Sodium azide
Precaution of Use:	This product contains Sodium azide: a POISONOUS AND HAZARDOUS SUBSTANCE which should be handled by trained staff only.
Storage:	4 °C,-20 °C
Expiry Date:	6 months

## Images



### Western Blotting

**Image 1.** All lanes : Anti-LITAF Antibody (N-Term) at 1:1000 dilution Lane 1: A431 whole cell lysate Lane 2: HeLa whole cell lysate Lane 3: HepG2 whole cell lysate Lane 4: MCF-7 whole cell lysate Lysates/proteins at 20 µg per lane. Secondary Goat Anti-Rabbit IgG, (H+L), Peroxidase conjugated at 1/10000 dilution. Predicted band size : 17 kDa Blocking/Dilution buffer: 5 % NFDM/TBST.