

Datasheet for ABIN6243254  
**anti-MEK2 antibody (AA 372-400)**[Go to Product page](#)

## 3 Images

## Overview

Quantity:	400 µL
Target:	MEK2 (MAP2K2)
Binding Specificity:	AA 372-400
Reactivity:	Human
Host:	Rabbit
Clonality:	Polyclonal
Application:	Western Blotting (WB), Immunofluorescence (IF), Immunohistochemistry (Paraffin-embedded Sections) (IHC (p))

## Product Details

Immunogen:	This MAP2K2 antibody is generated from rabbits immunized with a KLH conjugated synthetic peptide between 372-400 amino acids from human MAP2K2.
Clone:	RB14015
Isotype:	Ig Fraction
Purification:	This antibody is purified through a protein A column, followed by peptide affinity purification.

## Target Details

Target:	MEK2 (MAP2K2)
Alternative Name:	MAP2K2 ( <a href="#">MAP2K2 Products</a> )
Background:	MAP2K2 is a dual specificity protein kinase that belongs to the MAP kinase kinase family. This kinase is known to play a critical role in mitogen growth factor signal transduction. It

## Target Details

phosphorylates and thus activates MAPK1/ERK2 and MAPK2/ERK3. The activation of this kinase itself is dependent on the Ser/Thr phosphorylation by MAP kinase kinase kinases. The inhibition or degradation of this kinase is found to be involved in the pathogenesis of Yersinia and anthrax.

Molecular Weight: 44424

NCBI Accession: [NP\\_109587](#)

UniProt: [P36507](#)

Pathways: [MAPK Signaling](#), [RTK Signaling](#), [Fc-epsilon Receptor Signaling Pathway](#), [Neurotrophin Signaling Pathway](#), [Activation of Innate immune Response](#), [Toll-Like Receptors Cascades](#), [Signaling of Hepatocyte Growth Factor Receptor](#), [BCR Signaling](#)

## Application Details

Application Notes: IF: 1:10~50. WB: 1:1000. IHC-P: 1:10~50

Restrictions: For Research Use only

## Handling

Format: Liquid

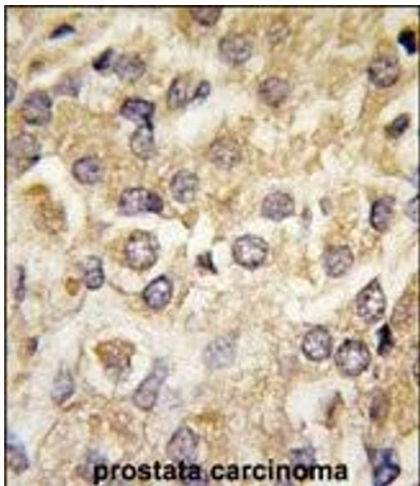
Buffer: Purified polyclonal antibody supplied in PBS with 0.09 % (W/V) sodium azide.

Preservative: Sodium azide

Precaution of Use: This product contains Sodium azide: a POISONOUS AND HAZARDOUS SUBSTANCE which should be handled by trained staff only.

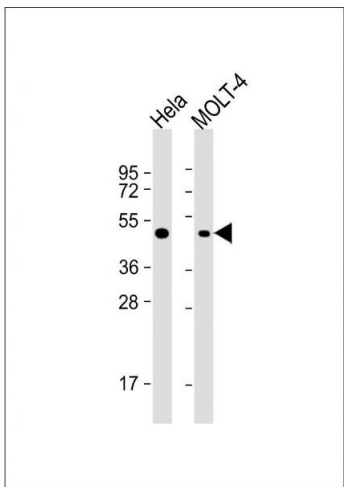
Storage: 4 °C, -20 °C

Expiry Date: 6 months



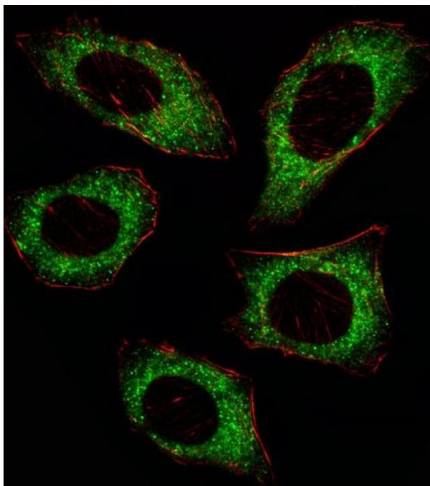
#### Immunohistochemistry (Paraffin-embedded Sections)

**Image 1.** Forlin-fixed and paraffin-embedded hun prostata carcino tissue reacted with P2K2 Antibody (ABIN6243254 and ABIN6579024) , which was peroxidase-conjugated to the secondary antibody, followed by DAB staining. This data demonstrates the use of this antibody for immunohistochemistry, clinical relevance has not been evaluated.



#### Western Blotting

**Image 2.** All lanes : Anti-P2K2 Antibody at 1:1000 dilution  
Lane 1: HeLa whole cell lysate Lane 2: MOLT-4 whole cell lysate  
Lysates/proteins at 20 µg per lane. Secondary Goat Anti-Rabbit IgG, (H+L), Peroxidase conjugated at 1/10000 dilution. Predicted band size : 44 kDa Blocking/Dilution buffer: 5 % NFDM/TBST.



#### Immunofluorescence

**Image 3.** Fluorescent ige of cell stained with P2K2 Antibody (ABIN6243254 and ABIN6579024)/SA080220AJ. cells were fixed with 4 % PFA (20 min), permeabilized with Triton X-100 (0.1 %, 10 min), then incubated with P2K2 priry antibody (1:25, 1 h at 37 °C). For secondary antibody, Alexa Fluor® 488 conjugated donkey anti-rabbit antibody (green) was used (1:400, 50 min at 37 °C).Cytoplasmic actin was counterstained with Alexa Fluor® 555 (red) conjugated Phalloidin (7 units/mL, 1 h at 37 °C). P2K2 immunoreactivity is localized to Cytoplasm significantly.