

Datasheet for ABIN6243266
anti-CHRM4 antibody (AA 201-236)[Go to Product page](#)

1 Image

Overview

Quantity:	200 µL
Target:	CHRM4
Binding Specificity:	AA 201-236
Reactivity:	Human
Host:	Rabbit
Clonality:	Polyclonal
Conjugate:	This CHRM4 antibody is un-conjugated
Application:	Western Blotting (WB)

Product Details

Immunogen:	This CHRM4 antibody is generated from a rabbit immunized with a KLH conjugated synthetic peptide between 201-236 amino acids from human CHRM4.
Clone:	RB53327
Isotype:	Ig Fraction
Purification:	This antibody is purified through a protein A column, followed by peptide affinity purification.

Target Details

Target:	CHRM4
Alternative Name:	CHRM4 (CHRM4 Products)
Background:	The muscarinic acetylcholine receptor mediates various cellular responses, including inhibition

Target Details

	of adenylate cyclase, breakdown of phosphoinositides and modulation of potassium channels through the action of G proteins. Primary transducing effect is inhibition of adenylate cyclase.
Molecular Weight:	53049
UniProt:	P08173
Pathways:	cAMP Metabolic Process , Inositol Metabolic Process , Synaptic Membrane

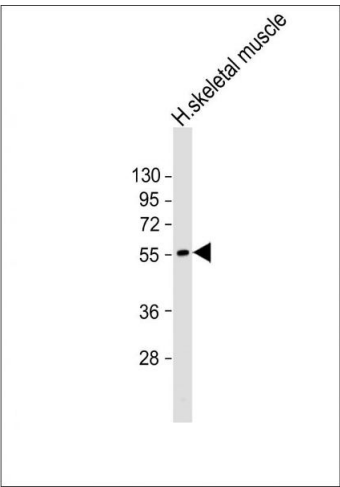
Application Details

Application Notes:	WB: 1:2000
Restrictions:	For Research Use only

Handling

Format:	Liquid
Buffer:	Purified polyclonal antibody supplied in PBS with 0.09 % (W/V) sodium azide.
Preservative:	Sodium azide
Precaution of Use:	This product contains Sodium azide: a POISONOUS AND HAZARDOUS SUBSTANCE which should be handled by trained staff only.
Storage:	4 °C, -20 °C
Expiry Date:	6 months

Images



Western Blotting

Image 1. Anti-CHRM4 Antibody (C-Term) at 1:2000 dilution + human skeletal muscle lysate Lysates/proteins at 20 µg per lane. Secondary Goat Anti-Rabbit IgG, (H+L), Peroxidase conjugated at 1/10000 dilution. Predicted band size : 53 kDa
Blocking/Dilution buffer: 5 % NFDM/TBST.