

Datasheet for ABIN6243299
anti-SKI antibody (AA 21-54)[Go to Product page](#)

1 Image

Overview

Quantity:	200 µL
Target:	SKI
Binding Specificity:	AA 21-54
Reactivity:	Human
Host:	Rabbit
Clonality:	Polyclonal
Conjugate:	This SKI antibody is un-conjugated
Application:	Western Blotting (WB)

Product Details

Immunogen:	This SKI antibody is generated from a rabbit immunized with a KLH conjugated synthetic peptide between 21-54 amino acids from human SKI.
Clone:	RB54389
Isotype:	Ig Fraction
Predicted Reactivity:	Hs
Purification:	This antibody is purified through a protein A column, followed by peptide affinity purification.

Target Details

Target:	SKI
Alternative Name:	SKI (SKI Products)

Target Details

Background:	May play a role in terminal differentiation of skeletal muscle cells but not in the determination of cells to the myogenic lineage. Functions as a repressor of TGF-beta signaling.
Molecular Weight:	80005
UniProt:	P12755
Pathways:	Stem Cell Maintenance , Tube Formation , Skeletal Muscle Fiber Development

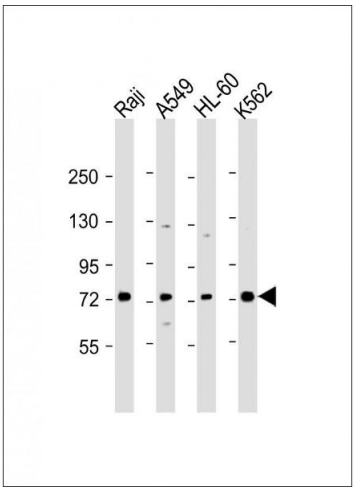
Application Details

Application Notes:	WB: 1:2000
Restrictions:	For Research Use only

Handling

Format:	Liquid
Buffer:	Purified polyclonal antibody supplied in PBS with 0.09 % (W/V) sodium azide.
Preservative:	Sodium azide
Precaution of Use:	This product contains Sodium azide: a POISONOUS AND HAZARDOUS SUBSTANCE which should be handled by trained staff only.
Storage:	4 °C,-20 °C
Expiry Date:	6 months

Images



Western Blotting

Image 1. All lanes : Anti-SKI Antibody (N-Term) at 1:2000 dilution Lane 1: Raji whole cell lysate Lane 2: A549 whole cell lysate Lane 3: HL-60 whole cell lysate Lane 4: K562 whole cell lysate Lysates/proteins at 20 µg per lane. Secondary Goat Anti-Rabbit IgG, (H+L), Peroxidase conjugated at 1/10000 dilution. Predicted band size : 80 kDa Blocking/Dilution buffer: 5 % NFDM/TBST.