

Datasheet for ABIN6243308  
**anti-CCL26 antibody (AA 58-92)**[Go to Product page](#)

## 2 Images

## Overview

Quantity:	200 µL
Target:	CCL26
Binding Specificity:	AA 58-92
Reactivity:	Human
Host:	Rabbit
Clonality:	Polyclonal
Conjugate:	This CCL26 antibody is un-conjugated
Application:	Western Blotting (WB), Flow Cytometry (FACS)

## Product Details

Immunogen:	This CCL26 antibody is generated from a rabbit immunized with a KLH conjugated synthetic peptide between 58-92 amino acids from the human region of human CCL26.
Clone:	RB57589
Isotype:	Ig Fraction
Purification:	This antibody is purified through a protein A column, followed by peptide affinity purification.

## Target Details

Target:	CCL26
Alternative Name:	CCL26 ( <a href="#">CCL26 Products</a> )
Background:	Chemotactic for eosinophils and basophils. Binds to CCR3.

## Target Details

Molecular Weight:	10648
UniProt:	<a href="#">Q9Y258</a>
Pathways:	<a href="#">Regulation of Actin Filament Polymerization</a>

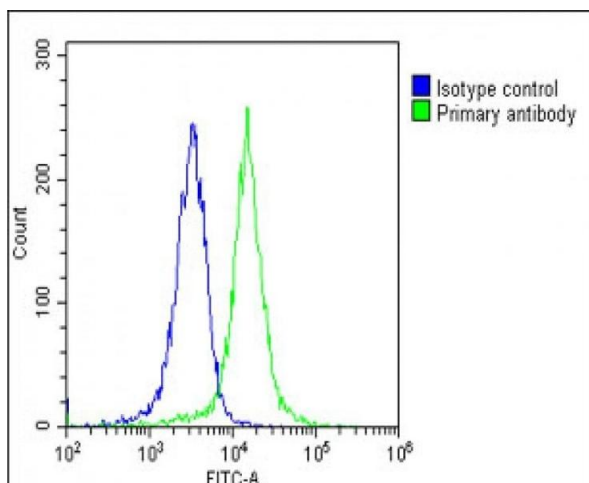
## Application Details

Application Notes:	WB: 1:2000. FC: 1:25
Restrictions:	For Research Use only

## Handling

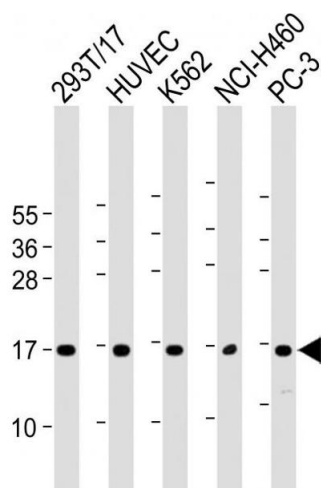
Format:	Liquid
Buffer:	Purified polyclonal antibody supplied in PBS with 0.09 % (W/V) sodium azide.
Preservative:	Sodium azide
Precaution of Use:	This product contains Sodium azide: a POISONOUS AND HAZARDOUS SUBSTANCE which should be handled by trained staff only.
Storage:	4 °C,-20 °C
Expiry Date:	6 months

## Images



### Flow Cytometry

**Image 1.** Overlay histogram showing K562 cells stained with (ABIN6243308 and ABIN6578864)(green line). The cells were fixed with 2 % paraformaldehyde (10 min) and then permeabilized with 90 % methanol for 10 min. The cells were then incubated in 2 % bovine serum albumin to block non-specific protein-protein interactions followed by the antibody ((ABIN6243308 and ABIN6578864), 1:25 dilution) for 60 min at 37 °C. The secondary antibody used was Goat-Anti-Rabbit IgG, DyLight® 488 Conjugated Highly Cross-Adsorbed(1583138) at 1/200 dilution for 40 min at 37 °C. Isotype control antibody (blue line) was rabbit IgG1 (1 µg/1x10<sup>6</sup> cells) used under the same conditions. Acquisition



of >10,000 events was performed.

Western Blotting

**Image 2.** All lanes : Anti-CCL26 Antibody (C-Term) at 1:2000 dilution Lane 1: 293T/17 whole cell lysate Lane 2: HUVEC whole cell lysate Lane 3: K562 whole cell lysate Lane 4: NCI- whole cell lysate Lane 5: PC-3 whole cell lysate Lysates/proteins at 20 µg per lane. Secondary Goat Anti- Rabbit IgG, (H+L), Peroxidase conjugated at 1/10000 dilution. Predicted band size : 11 kDa Blocking/Dilution buffer: 5 % NFDM/TBST.