

Datasheet for ABIN6243310  
**anti-SULT1A1 antibody (AA 246-279)**[Go to Product page](#)

## 1 Image

## Overview

Quantity:	400 µL
Target:	SULT1A1
Binding Specificity:	AA 246-279
Reactivity:	Human
Host:	Rabbit
Clonality:	Polyclonal
Conjugate:	This SULT1A1 antibody is un-conjugated
Application:	Western Blotting (WB)

## Product Details

Immunogen:	This SULT1A1 antibody is generated from a rabbit immunized with a KLH conjugated synthetic peptide between 246-279 amino acids of human SULT1A1.
Clone:	RB51775
Isotype:	IgG
Purification:	This antibody is purified through a protein A column, followed by peptide affinity purification.

## Target Details

Target:	SULT1A1
Alternative Name:	SULT1A1 ( <a href="#">SULT1A1 Products</a> )
Background:	Sulfotransferase that utilizes 3'-phospho-5'-adenylyl sulfate (PAPS) as sulfonate donor to

## Target Details

catalyze the sulfate conjugation of catecholamines, phenolic drugs and neurotransmitters. Has also estrogen sulfotransferase activity. responsible for the sulfonation and activation of minoxidil. Is Mediates the metabolic activation of carcinogenic N- hydroxyarylamines to DNA binding products and could so participate as modulating factor of cancer risk.

Molecular Weight: 34165

UniProt: [P50225](#)

## Application Details

Application Notes: WB: 1:1000

Restrictions: For Research Use only

## Handling

Format: Liquid

Buffer: Purified polyclonal antibody supplied in PBS with 0.09 % (W/V) sodium azide.

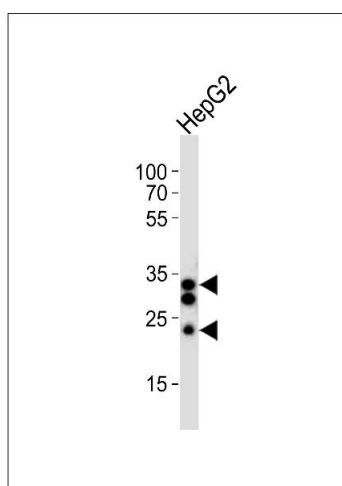
Preservative: Sodium azide

Precaution of Use: This product contains Sodium azide: a POISONOUS AND HAZARDOUS SUBSTANCE which should be handled by trained staff only.

Storage: 4 °C,-20 °C

Expiry Date: 6 months

## Images



### Western Blotting

**Image 1.** Western blot analysis of lysate from HepG2 cell line, using SULT1A1 Antibody (C-term) (ABIN6243310 and ABIN6577791). (ABIN6243310 and ABIN6577791) was diluted at 1:1000. A goat anti-rabbit IgG H&L(HRP) at 1:10000 dilution was used as the secondary antibody. Lysate at 20 µg.