

Datasheet for ABIN6243311  
**anti-SULT1A1 antibody (AA 246-279)**[Go to Product page](#)

## 2 Images

## Overview

Quantity:	400 µL
Target:	SULT1A1
Binding Specificity:	AA 246-279
Reactivity:	Human
Host:	Rabbit
Clonality:	Polyclonal
Conjugate:	This SULT1A1 antibody is un-conjugated
Application:	Western Blotting (WB), Flow Cytometry (FACS)

## Product Details

Immunogen:	This SULT1A1 antibody is generated from a rabbit immunized with a KLH conjugated synthetic peptide between 246-279 amino acids of human SULT1A1.
Clone:	RB51774
Isotype:	IgG
Purification:	This antibody is purified through a protein A column, followed by peptide affinity purification.

## Target Details

Target:	SULT1A1
Alternative Name:	SULT1A1 ( <a href="#">SULT1A1 Products</a> )
Background:	Sulfotransferase that utilizes 3'-phospho-5'-adenylyl sulfate (PAPS) as sulfonate donor to

## Target Details

catalyze the sulfate conjugation of catecholamines, phenolic drugs and neurotransmitters. Has also estrogen sulfotransferase activity. responsible for the sulfonation and activation of minoxidil. Is Mediates the metabolic activation of carcinogenic N- hydroxyarylamines to DNA binding products and could so participate as modulating factor of cancer risk.

Molecular Weight: 34165

UniProt: [P50225](#)

## Application Details

Application Notes: WB: 1:1000. FC: 1:25

Restrictions: For Research Use only

## Handling

Format: Liquid

Buffer: Purified polyclonal antibody supplied in PBS with 0.09 % (W/V) sodium azide.

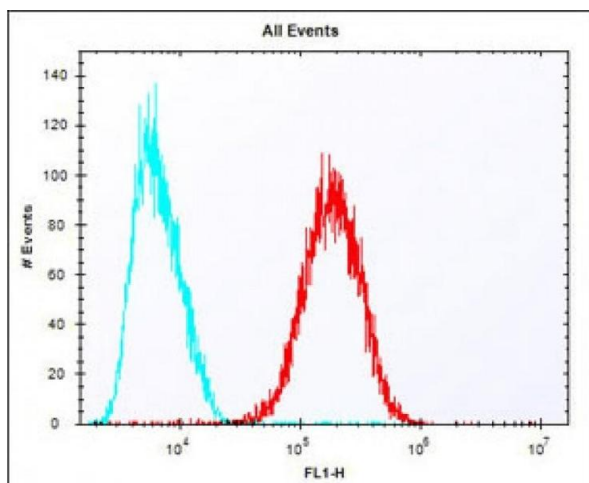
Preservative: Sodium azide

Precaution of Use: This product contains Sodium azide: a POISONOUS AND HAZARDOUS SUBSTANCE which should be handled by trained staff only.

Storage: 4 °C,-20 °C

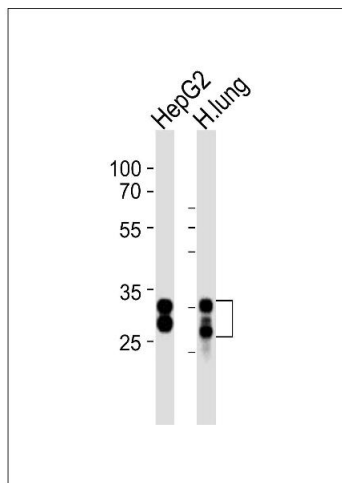
Expiry Date: 6 months

## Images



### Flow Cytometry

**Image 1.** Overlay histogram showing HepG2 cells stained with (ABIN6243311 and ABIN6577816) (red line). The cells were fixed with 2 % paraformaldehyde (10 min) and then permeabilized with 90 % methanol for 10 min. The cells were then incubated in 2 % bovine serum albumin to block non-specific protein-protein interactions followed by the antibody ((ABIN6243311 and ABIN6577816), 1:25 dilution) for 60 min at 37 °C. The secondary antibody used was Alexa Fluor® 488 goat anti-rabbit IgG (H+L) (1583138) at 1/400



dilution for 40 min at 37 °C. Isotype control antibody (blue line) was rabbit IgG1 (1 µg/1x10<sup>6</sup> cells) used under the same conditions. Acquisition of >10, 000 events was performed.

### Western Blotting

**Image 2.** Western blot analysis of lysates from HepG2 cell line and human lung tissue (from left to right), using SULT1A1 Antibody (C-term) (ABIN6243311 and ABIN6577816). (ABIN6243311 and ABIN6577816) was diluted at 1:1000 at each lane. A goat anti-rabbit IgG H&L(HRP) at 1:10000 dilution was used as the secondary antibody. Lysates at 20 µg per lane.