

Datasheet for ABIN6243313  
**anti-T-Box 22 antibody (C-Term)**[Go to Product page](#)

## 2 Images

## Overview

Quantity:	400 µL
Target:	T-Box 22 (TBX22)
Binding Specificity:	AA 491-525, C-Term
Reactivity:	Human
Host:	Rabbit
Clonality:	Polyclonal
Conjugate:	This T-Box 22 antibody is un-conjugated
Application:	Western Blotting (WB)

## Product Details

Immunogen:	This TBX22 antibody is generated from a rabbit immunized with a KLH conjugated synthetic peptide between 491-525 amino acids from the C-terminal region of human TBX22.
Clone:	RB50799
Isotype:	Ig Fraction
Purification:	This antibody is purified through a protein A column, followed by peptide affinity purification.

## Target Details

Target:	T-Box 22 (TBX22)
Alternative Name:	TBX22 ( <a href="#">TBX22 Products</a> )
Background:	Probable transcriptional regulator involved in developmental processes. This is major

## Target Details

determinant crucial to palatogenesis.

Molecular Weight: 57910

UniProt: [Q9Y458](#)

## Application Details

Application Notes: WB: 1:1000. WB: 1:1000

Restrictions: For Research Use only

## Handling

Format: Liquid

Buffer: Purified polyclonal antibody supplied in PBS with 0.09 % (W/V) sodium azide.

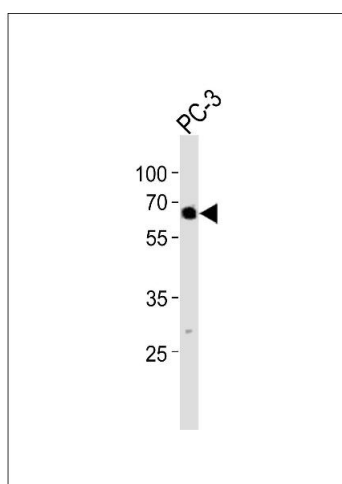
Preservative: Sodium azide

Precaution of Use: This product contains Sodium azide: a POISONOUS AND HAZARDOUS SUBSTANCE which should be handled by trained staff only.

Storage: 4 °C,-20 °C

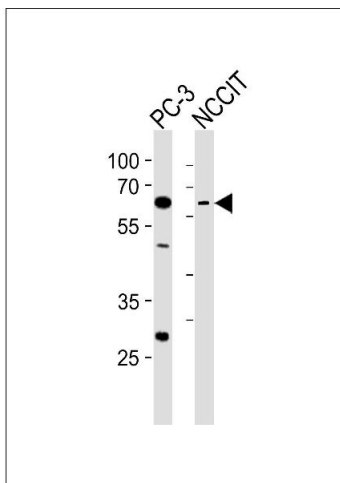
Expiry Date: 6 months

## Images



### Western Blotting

**Image 1.** Western blot analysis of lysate from PC-3 cell line, using TBX22 Antibody (C-term) (ABIN6243313 and ABIN6577614). (ABIN6243313 and ABIN6577614) was diluted at 1:1000. A goat anti-rabbit IgG H&L(HRP) at 1:10000 dilution was used as the secondary antibody. Lysate at 20 µg.



### Western Blotting

**Image 2.** Western blot analysis of lysates from PC-3, NCCIT cell line (from left to right), using TBX22 Antibody (C-term) (ABIN6243313 and ABIN6577614). (ABIN6243313 and ABIN6577614) was diluted at 1:1000 at each lane. A goat anti-rabbit IgG H&L(HRP) at 1:10000 dilution was used as the secondary antibody. Lysates at 35 µg per lane.