

Datasheet for ABIN6243332  
**anti-Solute Carrier Family 14 (Urea Transporter, Kidney)  
Member 2 (SLC14A2) (AA 42-76) antibody**

[Go to Product page](#)

### 3 Images

#### Overview

Quantity:	200 µL
Target:	Solute Carrier Family 14 (Urea Transporter, Kidney) Member 2 (SLC14A2)
Binding Specificity:	AA 42-76
Reactivity:	Human
Host:	Rabbit
Clonality:	Polyclonal
Conjugate:	Un-conjugated
Application:	Western Blotting (WB), Immunohistochemistry (Paraffin-embedded Sections) (IHC (p))

#### Product Details

Immunogen:	This SLC14A2 antibody is generated from a rabbit immunized with a KLH conjugated synthetic peptide between 42-76 amino acids from the human region of human SLC14A2.
Clone:	RB57903
Isotype:	Ig Fraction
Purification:	This antibody is purified through a protein A column, followed by peptide affinity purification.

#### Target Details

Target:	Solute Carrier Family 14 (Urea Transporter, Kidney) Member 2 (SLC14A2)
Alternative Name:	SLC14A2 ( <a href="#">SLC14A2 Products</a> )
Background:	Specialized low-affinity vasopressin-regulated urea transporter. Mediates rapid transepithelial

## Target Details

urea transport across the inner medullary collecting duct and plays a major role in the urinary concentrating mechanism.

Molecular Weight: 101209

UniProt: [Q15849](#)

Pathways: [Response to Water Deprivation](#)

## Application Details

Application Notes: WB: 1:500. WB: 1:500. IHC-P-Leica: 1:500

Restrictions: For Research Use only

## Handling

Format: Liquid

Buffer: Purified polyclonal antibody supplied in PBS with 0.09 % (W/V) sodium azide.

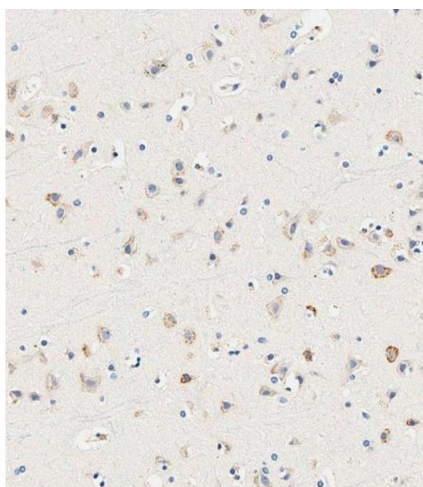
Preservative: Sodium azide

Precaution of Use: This product contains Sodium azide: a POISONOUS AND HAZARDOUS SUBSTANCE which should be handled by trained staff only.

Storage: 4 °C, -20 °C

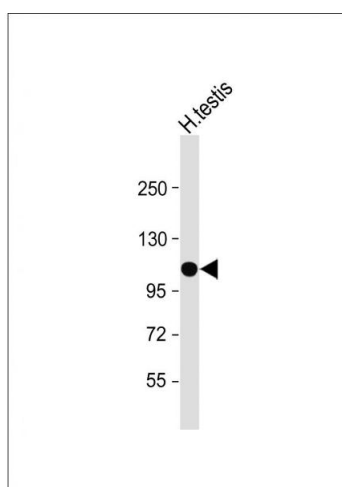
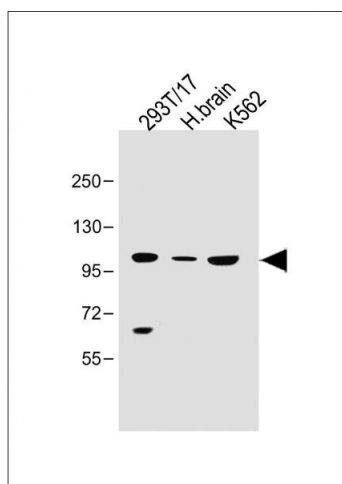
Expiry Date: 6 months

## Images



### Immunohistochemistry (Paraffin-embedded Sections)

**Image 1.** Immunohistochemical analysis of paraffin-embedded human brain tissue using (ABIN6243332 and ABIN6578894) performed on the Leica® BOND RXm. Samples were incubated with primary Antibody (1/500) for 1 hours at room temperature. A undiluted biotinylated CRF Anti-Polyvalent HRP Polymer antibody was used as the secondary antibody.



### Western Blotting

**Image 2.** All lanes : Anti-SLC14A2 Antibody (N-Term) at 1:500 dilution Lane 1: 293T/17 whole cell lysate Lane 2: Human brain lysate Lane 3: K562 whole cell lysate 293T/17 whole cell lysate at 30 µg per lane. H. brain lysate at 50 µg per lane. K562 whole cell lysate at 40 µg per lane. Secondary Goat Anti-Rabbit IgG, (H+L), Peroxidase conjugated at 1/10000 dilution. Predicted band size : 101 kDa Blocking/Dilution buffer: 5 % NFDM/TBST.

### Western Blotting

**Image 3.** Anti-SLC14A2 Antibody (N-Term) at 1:500 dilution + Human testis lysate Lysates/proteins at 20 µg per lane. Secondary Goat Anti-Rabbit IgG, (H+L), Peroxidase conjugated at 1/10000 dilution. Predicted band size : 101 kDa Blocking/Dilution buffer: 5 % NFDM/TBST.