

Datasheet for ABIN6243343
anti-ZNF148 antibody (AA 287-320)[Go to Product page](#)

1 Image

Overview

Quantity:	400 µL
Target:	ZNF148
Binding Specificity:	AA 287-320
Reactivity:	Zebrafish (Danio rerio)
Host:	Rabbit
Clonality:	Polyclonal
Conjugate:	This ZNF148 antibody is un-conjugated
Application:	Western Blotting (WB)

Product Details

Immunogen:	This (DANRE) znf148 antibody is generated from a rabbit immunized with a KLH conjugated synthetic peptide between 287-320 amino acids of DANRE znf148.
Clone:	RB46462
Isotype:	IgG
Purification:	This antibody is purified through a protein A column, followed by peptide affinity purification.

Target Details

Target:	ZNF148
Alternative Name:	znf148 (ZNF148 Products)
Background:	Involved in transcriptional regulation. Represses the transcription of a number of genes.

Target Details

Required for primitive and definitive hematopoiesis during embryonic development.

Molecular Weight: 90507

UniProt: [A0MS83](#)

Application Details

Application Notes: WB: 1:1000

Restrictions: For Research Use only

Handling

Format: Liquid

Buffer: Purified polyclonal antibody supplied in PBS with 0.09 % (W/V) sodium azide.

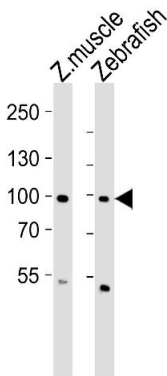
Preservative: Sodium azide

Precaution of Use: This product contains Sodium azide: a POISONOUS AND HAZARDOUS SUBSTANCE which should be handled by trained staff only.

Storage: 4 °C,-20 °C

Expiry Date: 6 months

Images



Western Blotting

Image 1. Western blot analysis of lysates from zebra fish muscle, Zebrafish tissue lysate (from left to right), using (DANRE) znf148 Antibody (Center) Azb18713c. Azb18713c was diluted at 1:1000 at each lane. A goat anti-rabbit IgG H&L(HRP) at 1:5000 dilution was used as the secondary antibody. Lysates at 35 µg per lane.