

Datasheet for ABIN6243366
anti-LPP antibody (AA 32-66)[Go to Product page](#)

1 Image

Overview

Quantity:	50 µL
Target:	LPP
Binding Specificity:	AA 32-66
Reactivity:	Human, Mouse
Host:	Rabbit
Clonality:	Polyclonal
Conjugate:	This LPP antibody is un-conjugated
Application:	Western Blotting (WB)

Product Details

Immunogen:	This LPP antibody is generated from a rabbit immunized with a KLH conjugated synthetic peptide between 32-66 amino acids from the human LPP.
Clone:	RB54229
Isotype:	Ig Fraction
Predicted Reactivity:	Rat
Purification:	This antibody is purified through a protein A column, followed by peptide affinity purification.

Target Details

Target:	LPP
Alternative Name:	LPP (LPP Products)

Target Details

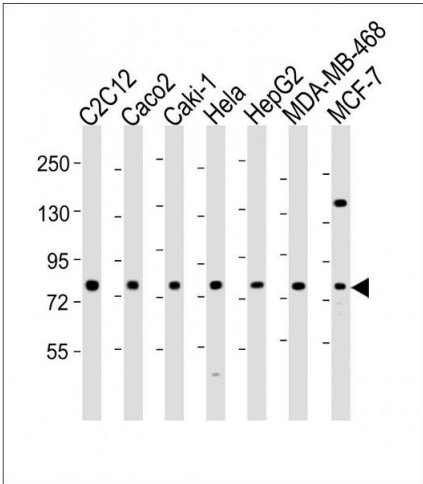
Background:	May play a structural role at sites of cell adhesion in maintaining cell shape and motility. In addition to these structural functions, it may also be implicated in signaling events and activation of gene transcription. May be involved in signal transduction from cell adhesion sites to the nucleus allowing successful integration of signals arising from soluble factors and cell-cell adhesion sites. Also suggested to serve as a scaffold protein upon which distinct protein complexes are assembled in the cytoplasm and in the nucleus.
Molecular Weight:	65746
UniProt:	Q93052

Application Details

Application Notes:	WB: 1:2000
Restrictions:	For Research Use only

Handling

Format:	Liquid
Buffer:	Purified polyclonal antibody supplied in PBS with 0.09 % (W/V) sodium azide.
Preservative:	Sodium azide
Precaution of Use:	This product contains Sodium azide: a POISONOUS AND HAZARDOUS SUBSTANCE which should be handled by trained staff only.
Storage:	4 °C, -20 °C
Expiry Date:	6 months



Western Blotting

Image 1. All lanes : Anti-L Antibody (N-Term) at 1:2000 dilution Lane 1: C2C12 whole cell lysate Lane 2: Caco2 whole cell lysate Lane 3: Caki-1 whole cell lysate Lane 4: Hela whole cell lysate Lane 5: HepG2 whole cell lysate Lane 6: MDA-MB-468 whole cell lysate Lane 7: MCF-7 whole cell lysate Lysates/proteins at 20 µg per lane. Secondary Goat Anti-Rabbit IgG, (H+L), Peroxidase conjugated at 1/10000 dilution. Predicted band size : 66 kDa Blocking/Dilution buffer: 5 % NFDM/TBST.