

Datasheet for ABIN6243368
anti-LEPRE1 antibody (AA 499-533)



[Go to Product page](#)

1 Image

Overview

Quantity:	400 µL
Target:	LEPRE1
Binding Specificity:	AA 499-533
Reactivity:	Human
Host:	Rabbit
Clonality:	Polyclonal
Conjugate:	This LEPRE1 antibody is un-conjugated
Application:	Western Blotting (WB)

Product Details

Immunogen:	This LEPRE1 antibody is generated from a rabbit immunized with a KLH conjugated synthetic peptide between 499-533 amino acids from the Central region of human LEPRE1.
Clone:	RB49867
Isotype:	Ig Fraction
Predicted Reactivity:	M, Rat
Purification:	This antibody is purified through a protein A column, followed by peptide affinity purification.

Target Details

Target:	LEPRE1
Alternative Name:	LEPRE1 (LEPRE1 Products)

Target Details

Background: Basement membrane-associated chondroitin sulfate proteoglycan (CSPG). Has prolyl 3-hydroxylase activity catalyzing the post-translational formation of 3-hydroxyproline in -Xaa-Pro-Gly- sequences in collagens, especially types IV and V. May be involved in the secretory pathway of cells. Has growth suppressive activity in fibroblasts.

Molecular Weight: 83394

UniProt: [Q32P28](#)

Application Details

Application Notes: WB: 1:1000

Restrictions: For Research Use only

Handling

Format: Liquid

Buffer: Purified polyclonal antibody supplied in PBS with 0.09 % (W/V) sodium azide.

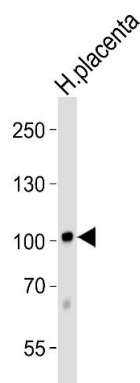
Preservative: Sodium azide

Precaution of Use: This product contains Sodium azide: a POISONOUS AND HAZARDOUS SUBSTANCE which should be handled by trained staff only.

Storage: 4 °C, -20 °C

Expiry Date: 6 months

Images



Western Blotting

Image 1. Western blot analysis of lysate from human placenta tissue lysate, using LEPRE1 Antibody (Center) (ABIN6243368 and ABIN6577484). (ABIN6243368 and ABIN6577484) was diluted at 1:1000. A goat anti-rabbit IgG H&L(HRP) at 1:5000 dilution was used as the secondary antibody. Lysate at 35 µg.