



[Go to Product page](#)

Datasheet for ABIN6243371  
**anti-RGS3 antibody (AA 273-307)**

1 Image

### Overview

Quantity:	200 µL
Target:	RGS3
Binding Specificity:	AA 273-307
Reactivity:	Human
Host:	Rabbit
Clonality:	Polyclonal
Conjugate:	This RGS3 antibody is un-conjugated
Application:	Western Blotting (WB)

### Product Details

Immunogen:	This RGS3 antibody is generated from a rabbit immunized with a KLH conjugated synthetic peptide between 273-307 amino acids from human RGS3.
Clone:	RB53399
Isotype:	Ig Fraction
Purification:	This antibody is purified through a protein A column, followed by peptide affinity purification.

### Target Details

Target:	RGS3
Alternative Name:	RGS3 ( <a href="#">RGS3 Products</a> )
Background:	Down-regulates signaling from heterotrimeric G-proteins by increasing the GTPase activity of

## Target Details

the alpha subunits, thereby driving them into their inactive GDP-bound form. Down-regulates G-protein-mediated release of inositol phosphates and activation of MAP kinases.

Molecular Weight: 132336

UniProt: [P49796](#)

Pathways: [Myometrial Relaxation and Contraction](#), [Regulation of G-Protein Coupled Receptor Protein Signaling](#)

## Application Details

Application Notes: WB: 1:1000

Restrictions: For Research Use only

## Handling

Format: Liquid

Buffer: Purified polyclonal antibody supplied in PBS with 0.09 % (W/V) sodium azide.

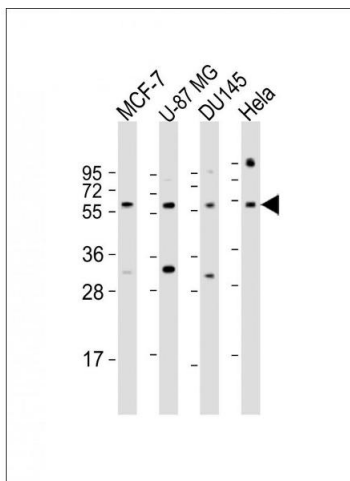
Preservative: Sodium azide

Precaution of Use: This product contains Sodium azide: a POISONOUS AND HAZARDOUS SUBSTANCE which should be handled by trained staff only.

Storage: 4 °C,-20 °C

Expiry Date: 6 months

## Images



### Western Blotting

**Image 1.** All lanes : Anti-RGS3 Antibody (N-Term) at 1:1000 dilution Lane 1: MCF-7 whole cell lysate Lane 2: U-87 MG whole cell lysate Lane 3: D whole cell lysate Lane 4: HeLa whole cell lysate Lysates/proteins at 20 µg per lane. Secondary Goat Anti-Rabbit IgG, (H+L), Peroxidase conjugated at 1/10000 dilution. Predicted band size : 57 kDa Blocking/Dilution buffer: 5 % NFDN/TBST.