



[Go to Product page](#)

Datasheet for ABIN6243381

## anti-ZDHHC14 antibody (AA 283-317)

### 1 Image

#### Overview

Quantity:	400 µL
Target:	ZDHHC14
Binding Specificity:	AA 283-317
Reactivity:	Mouse
Host:	Rabbit
Clonality:	Polyclonal
Conjugate:	This ZDHHC14 antibody is un-conjugated
Application:	Western Blotting (WB)

#### Product Details

Immunogen:	This ZDHHC14 antibody is generated from a rabbit immunized with a KLH conjugated synthetic peptide between 283-317 amino acids from the Central region of human ZDHHC14.
Clone:	RB49351
Isotype:	Ig Fraction
Purification:	This antibody is purified through a protein A column, followed by peptide affinity purification.

#### Target Details

Target:	ZDHHC14
Alternative Name:	ZDHHC14 ( <a href="#">ZDHHC14 Products</a> )
Molecular Weight:	53388

## Target Details

UniProt: [Q8IZN3](#)

## Application Details

Application Notes: WB: 1:1000

Restrictions: For Research Use only

## Handling

Format: Liquid

Buffer: Purified polyclonal antibody supplied in PBS with 0.09 % (W/V) sodium azide.

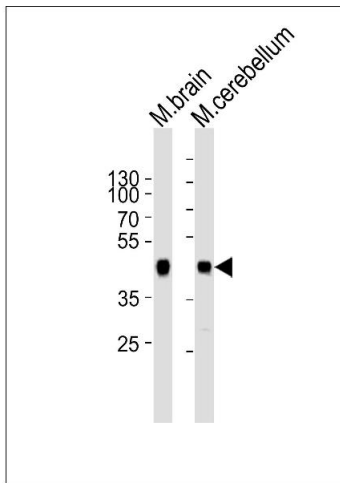
Preservative: Sodium azide

Precaution of Use: This product contains Sodium azide: a POISONOUS AND HAZARDOUS SUBSTANCE which should be handled by trained staff only.

Storage: 4 °C,-20 °C

Expiry Date: 6 months

## Images



### Western Blotting

**Image 1.** Western blot analysis of lysates from mouse brain and mouse cerebellum tissue lysate (from left to right), using ZDHHC14 Antibody (Center) (ABIN6243381 and ABIN6577546). (ABIN6243381 and ABIN6577546) was diluted at 1:1000 at each lane. A goat anti-rabbit IgG H&L(HRP) at 1:5000 dilution was used as the secondary antibody. Lysates at 35 µg per lane.