

Datasheet for ABIN6243390
anti-CRYbB2 antibody (N-Term)[Go to Product page](#)

1 Image

Overview

| | |
|----------------------|---------------------------------------|
| Quantity: | 400 µL |
| Target: | CRYbB2 |
| Binding Specificity: | AA 4-36, N-Term |
| Reactivity: | Human |
| Host: | Rabbit |
| Clonality: | Polyclonal |
| Conjugate: | This CRYbB2 antibody is un-conjugated |
| Application: | Western Blotting (WB) |

Product Details

| | |
|---------------|--|
| Immunogen: | This CRYBB2 antibody is generated from a rabbit immunized with a KLH conjugated synthetic peptide between 4-36 amino acids from the N-terminal region of human CRYBB2. |
| Clone: | RB46967 |
| Isotype: | Ig Fraction |
| Purification: | This antibody is purified through a protein A column, followed by peptide affinity purification. |

Target Details

| | |
|-------------------|--|
| Target: | CRYbB2 |
| Alternative Name: | CRYBB2 (CRYbB2 Products) |
| Background: | Crystallins are the dominant structural components of the vertebrate eye lens. |

Target Details

Molecular Weight: 23380

UniProt: [P43320](#)

Application Details

Application Notes: WB: 1:1000

Restrictions: For Research Use only

Handling

Format: Liquid

Buffer: Purified polyclonal antibody supplied in PBS with 0.09 % (W/V) sodium azide.

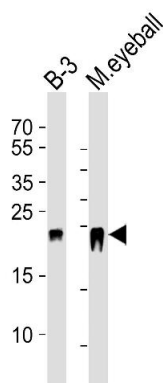
Preservative: Sodium azide

Precaution of Use: This product contains Sodium azide: a POISONOUS AND HAZARDOUS SUBSTANCE which should be handled by trained staff only.

Storage: 4 °C, -20 °C

Expiry Date: 6 months

Images



Western Blotting

Image 1. Western blot analysis of lysates from B-3 cell line and mouse eyeball tissue lysate (from left to right), using CRYBB2 Antibody (N-term) (ABIN6243390 and ABIN6577568). (ABIN6243390 and ABIN6577568) was diluted at 1:1000 at each lane. A goat anti-rabbit IgG H&L(HRP) at 1:5000 dilution was used as the secondary antibody. Lysates at 35 µg per lane.