



Datasheet for ABIN6243393  
**anti-ATP1A4 antibody (AA 12-46)**



[Go to Product page](#)

2 Images

Overview

Quantity:	200 µL
Target:	ATP1A4
Binding Specificity:	AA 12-46
Reactivity:	Human
Host:	Rabbit
Clonality:	Polyclonal
Conjugate:	This ATP1A4 antibody is un-conjugated
Application:	Western Blotting (WB), Flow Cytometry (FACS)

Product Details

Immunogen:	This ATP1A4 antibody is generated from a rabbit immunized with a KLH conjugated synthetic peptide between 12-46 amino acids from the human region of human ATP1A4.
Clone:	RB57439
Isotype:	Ig Fraction
Purification:	This antibody is purified through a protein A column, followed by peptide affinity purification.

Target Details

Target:	ATP1A4
Alternative Name:	ATP1A4 ( <a href="#">ATP1A4 Products</a> )
Background:	This is the catalytic component of the active enzyme, which catalyzes the hydrolysis of ATP

## Target Details

coupled with the exchange of sodium and potassium ions across the plasma membrane. This action creates the electrochemical gradient of sodium and potassium ions, providing the energy for active transport of various nutrients. Plays a role in sperm motility.

Molecular Weight: 114166

UniProt: [Q13733](#)

Pathways: [Thyroid Hormone Synthesis](#), [Proton Transport](#), [Ribonucleoside Biosynthetic Process](#)

## Application Details

Application Notes: WB: 1:2000. FC: 1:25

Restrictions: For Research Use only

## Handling

Format: Liquid

Buffer: Purified polyclonal antibody supplied in PBS with 0.09 % (W/V) sodium azide.

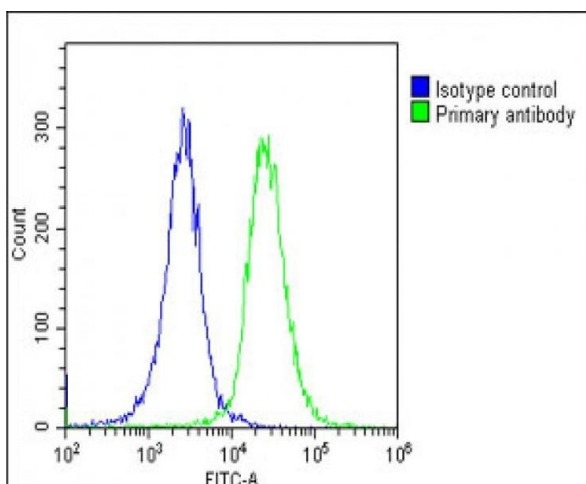
Preservative: Sodium azide

Precaution of Use: This product contains Sodium azide: a POISONOUS AND HAZARDOUS SUBSTANCE which should be handled by trained staff only.

Storage: 4 °C,-20 °C

Expiry Date: 6 months

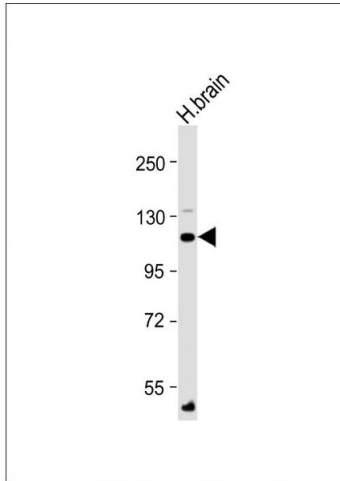
## Images



### Flow Cytometry

**Image 1.** Overlay histogram showing HeLa cells stained with (ABIN6243393 and ABIN6578845)(green line). The cells were fixed with 2 % paraformaldehyde (10 min) and then permeabilized with 90 % methanol for 10 min. The cells were then incubated in 2 % bovine serum albumin to block non-specific protein-protein interactions followed by the antibody ((ABIN6243393 and ABIN6578845), 1:25 dilution) for 60 min at 37 °C. The secondary antibody used was Goat-

Anti-Rabbit IgG, DyLight® 488 Conjugated Highly Cross-Adsorbed(OE188374) at 1/200 dilution for 40 min at 37 °C. Isotype control antibody (blue line) was rabbit IgG1 (1 µg/1x10<sup>6</sup> cells) used under the same conditions. Acquisition of >10,000 events was performed.



### Western Blotting

**Image 2.** Anti-ATP1A4 Antibody (N-Term) at 1:2000 dilution + Human brain lysate Lysates/proteins at 20 µg per lane. Secondary Goat Anti-Rabbit IgG, (H+L), Peroxidase conjugated at 1/10000 dilution. Predicted band size : 114 kDa Blocking/Dilution buffer: 5 % NFDm/TBST.