

Datasheet for ABIN6243397
anti-WIPF3 antibody (N-Term)[Go to Product page](#)

1 Image

Overview

Quantity:	200 µL
Target:	WIPF3
Binding Specificity:	AA 109-142, N-Term
Reactivity:	Human, Rat
Host:	Rabbit
Clonality:	Polyclonal
Conjugate:	This WIPF3 antibody is un-conjugated
Application:	Western Blotting (WB)

Product Details

Immunogen:	This WIPF3 antibody is generated from a rabbit immunized with a KLH conjugated synthetic peptide between 109-142 amino acids from the N-terminal region of human WIPF3.
Clone:	RB43359
Isotype:	Ig Fraction
Purification:	This antibody is purified through a protein A column, followed by peptide affinity purification.

Target Details

Target:	WIPF3
Alternative Name:	WIPF3 (WIPF3 Products)
Background:	May be a regulator of cytoskeletal organization. May have a role in spermatogenesis (By

Target Details

similarity).

Molecular Weight: 49458

UniProt: [A6NGB9](#)

Application Details

Application Notes: WB: 1:2000

Restrictions: For Research Use only

Handling

Format: Liquid

Buffer: Purified polyclonal antibody supplied in PBS with 0.09 % (W/V) sodium azide.

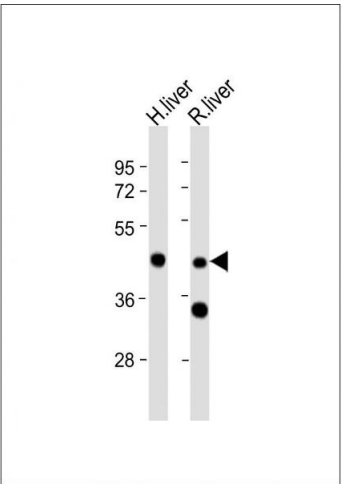
Preservative: Sodium azide

Precaution of Use: This product contains Sodium azide: a POISONOUS AND HAZARDOUS SUBSTANCE which should be handled by trained staff only.

Storage: 4 °C,-20 °C

Expiry Date: 6 months

Images



Western Blotting

Image 1. All lanes : Anti-WIPF3 Antibody (N-term) at 1:2000 dilution Lane 1: human liver lysate Lane 2: rat liver lysate Lysates/proteins at 20 µg per lane. Secondary Goat Anti-Rabbit IgG, (H+L), Peroxidase conjugated at 1/10000 dilution. Predicted band size : 49 kDa Blocking/Dilution buffer: 5 % NFDM/TBST.