



[Go to Product page](#)

Datasheet for ABIN6243398  
**anti-DLX1 antibody (AA 84-118)**

2 Images

Overview

Quantity:	200 µL
Target:	DLX1
Binding Specificity:	AA 84-118
Reactivity:	Human, Mouse
Host:	Rabbit
Clonality:	Polyclonal
Conjugate:	This DLX1 antibody is un-conjugated
Application:	Western Blotting (WB), Flow Cytometry (FACS)

Product Details

Immunogen:	This DLX1 antibody is generated from a rabbit immunized with a KLH conjugated synthetic peptide between 84-118 amino acids from the Central region of human DLX1.
Clone:	RB56775
Isotype:	Ig Fraction
Predicted Reactivity:	M
Purification:	This antibody is purified through a protein A column, followed by peptide affinity purification.

Target Details

Target:	DLX1
Alternative Name:	DLX1 ( <a href="#">DLX1 Products</a> )

## Target Details

**Background:** Likely to play a regulatory role in the development of the ventral forebrain. May play a role in craniofacial patterning and morphogenesis and may be involved in the early development of diencephalic subdivisions (By similarity).

**Molecular Weight:** 27320

**UniProt:** [P56177](#)

## Application Details

**Application Notes:** WB: 1:2000. FC: 1:25

**Restrictions:** For Research Use only

## Handling

**Format:** Liquid

**Buffer:** Purified polyclonal antibody supplied in PBS with 0.09 % (W/V) sodium azide.

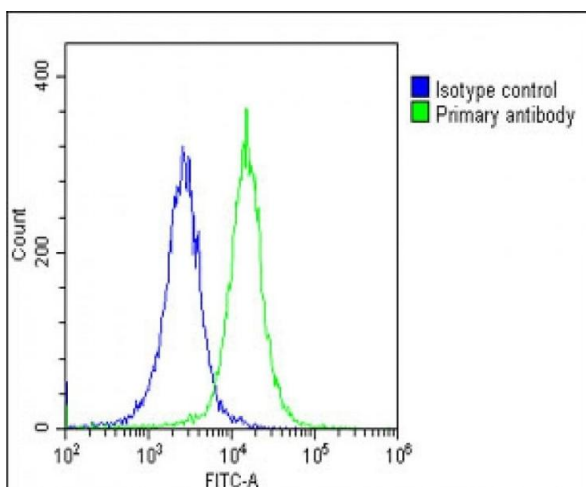
**Preservative:** Sodium azide

**Precaution of Use:** This product contains Sodium azide: a POISONOUS AND HAZARDOUS SUBSTANCE which should be handled by trained staff only.

**Storage:** 4 °C, -20 °C

**Expiry Date:** 6 months

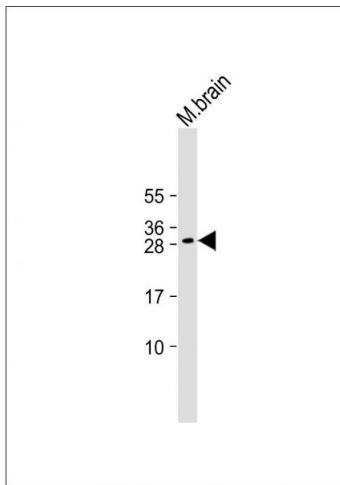
## Images



### Flow Cytometry

**Image 1.** Overlay histogram showing HeLa cells stained with (ABIN6243398 and ABIN6578829)(green line). The cells were fixed with 2 % paraformaldehyde (10 min) and then permeabilized with 90 % methanol for 10 min. The cells were then incubated in 2 % bovine serum albumin to block non-specific protein-protein interactions followed by the antibody ((ABIN6243398 and ABIN6578829), 1:25 dilution) for 60 min at 37 °C. The secondary antibody used was Goat-Anti-Rabbit IgG, DyLight® 488 Conjugated Highly Cross-Adsorbed(OE188374) at 1/200 dilution for 40 min at 37 °C.

Isotype control antibody (blue line) was rabbit IgG1 (1  $\mu$ g/ $1 \times 10^6$  cells) used under the same conditions. Acquisition of  $>10,000$  events was performed.



### Western Blotting

**Image 2.** Anti-DLX1 Antibody (Center) at 1:2000 dilution + Mouse brain lysate Lysates/proteins at 20  $\mu$ g per lane. Secondary Goat Anti-Rabbit IgG, (H+L), Peroxidase conjugated at 1/10000 dilution. Predicted band size : 27 kDa Blocking/Dilution buffer: 5 % NFDN/TBST.