



[Go to Product page](#)

Datasheet for ABIN6243400  
**anti-NSFL1C antibody (AA 214-248)**

3 Images

### Overview

Quantity:	200 µL
Target:	NSFL1C
Binding Specificity:	AA 214-248
Reactivity:	Human, Mouse
Host:	Rabbit
Clonality:	Polyclonal
Conjugate:	This NSFL1C antibody is un-conjugated
Application:	Western Blotting (WB), Immunohistochemistry (Paraffin-embedded Sections) (IHC (p)), Flow Cytometry (FACS)

### Product Details

Immunogen:	This NSFL1C antibody is generated from a rabbit immunized with a KLH conjugated synthetic peptide between 214-248 amino acids from the Central region of human NSFL1C.
Clone:	RB56735
Isotype:	Ig Fraction
Predicted Reactivity:	B, Rat
Purification:	This antibody is purified through a protein A column, followed by peptide affinity purification.

### Target Details

Target:	NSFL1C
---------	--------

## Target Details

---

Alternative Name: [NSFL1C \(NSFL1C Products\)](#)

---

Background: Reduces the ATPase activity of VCP. Necessary for the fragmentation of Golgi stacks during mitosis and for VCP-mediated reassembly of Golgi stacks after mitosis. May play a role in VCP-mediated formation of transitional endoplasmic reticulum (tER) (By similarity). Inhibits the activity of CTSL (in vitro).

---

Molecular Weight: 40573

---

UniProt: [Q9UNZ2](#)

---

## Application Details

---

Application Notes: WB: 1:2000. IHC-P: 1:25. FC: 1:25

---

Restrictions: For Research Use only

---

## Handling

---

Format: Liquid

---

Buffer: Purified polyclonal antibody supplied in PBS with 0.09 % (W/V) sodium azide.

---

Preservative: Sodium azide

---

Precaution of Use: This product contains Sodium azide: a POISONOUS AND HAZARDOUS SUBSTANCE which should be handled by trained staff only.

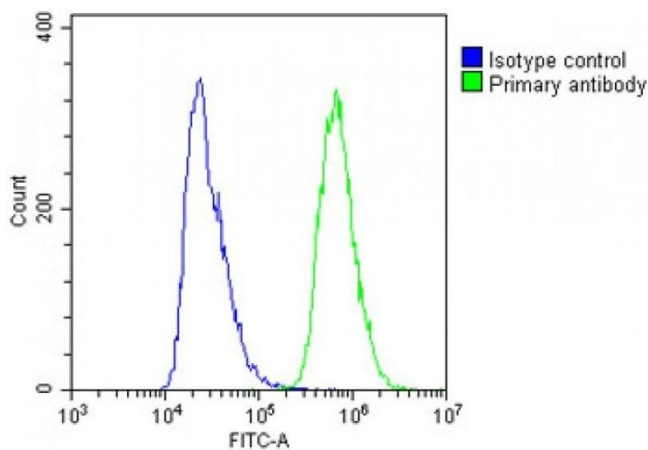
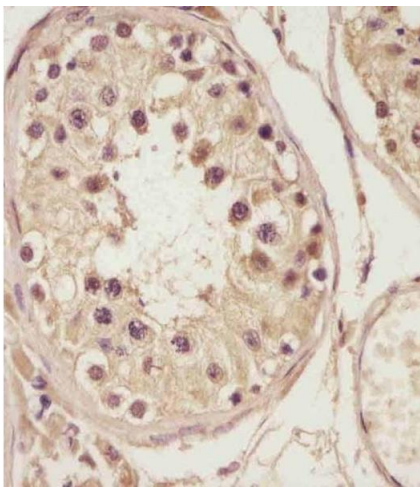
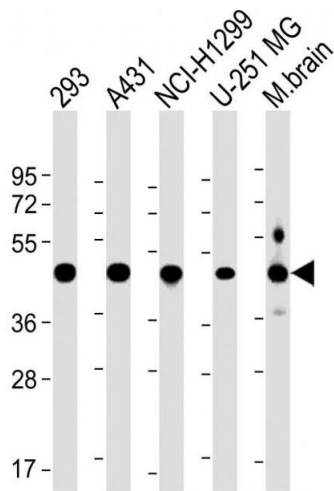
---

Storage: 4 °C,-20 °C

---

Expiry Date: 6 months

---



### Western Blotting

**Image 1.** All lanes : Anti-NSFL1C Antibody (Center) at 1:2000 dilution Lane 1: 293 whole cell lysate Lane 2: A431 whole cell lysate Lane 3: NCI- whole cell lysate Lane 4: U-251 MG whole cell lysate Lane 5: Mouse brain lysate Lysates/proteins at 20 µg per lane. Secondary Goat Anti-Rabbit IgG, (H+L), Peroxidase conjugated at 1/10000 dilution. Predicted band size : 41 kDa Blocking/Dilution buffer: 5 % NFDM/TBST.

### Immunohistochemistry (Paraffin-embedded Sections)

**Image 2.** (ABIN6243400 and ABIN6578788) staining NSFL1C in human testis tissue sections by Immunohistochemistry (IHC-P - paraformaldehyde-fixed, paraffin-embedded sections). Tissue was fixed with formaldehyde and blocked with 3 % BSA for 0.5 hour at room temperature, antigen retrieval was by heat mediation with a citrate buffer (pH 6). Samples were incubated with primary antibody (1/25) for 1 hours at 37 °C. A undiluted biotinylated goat polyvalent antibody was used as the secondary antibody.

### Flow Cytometry

**Image 3.** Overlay histogram showing A431 cells stained with (ABIN6243400 and ABIN6578788)(green line). The cells were fixed with 2 % paraformaldehyde and then permeabilized with 90 % methanol for 10 min. The cells were then incubated in 2 % bovine serum albumin to block non-specific protein-protein interactions followed by the antibody (1:25 dilution) for 60 min at 37 °C. The secondary antibody used was Goat-Anti-Rabbit IgG, DyLight® 488 Conjugated Highly Cross-Adsorbed at 1/200 dilution for 40 min at Room temperature. Isotype control antibody (blue line) was rabbit IgG1 (1 µg/1x10<sup>6</sup> cells) used under the same conditions. Acquisition of >10, 000 events was

performed.