

Datasheet for ABIN6243409

anti-C1GALT1C1 antibody (AA 26-60)[Go to Product page](#)**1** Image

Overview

Quantity:	200 µL
Target:	C1GALT1C1
Binding Specificity:	AA 26-60
Reactivity:	Human
Host:	Rabbit
Clonality:	Polyclonal
Conjugate:	This C1GALT1C1 antibody is un-conjugated
Application:	Western Blotting (WB)

Product Details

Immunogen:	This C1GALT1C1 antibody is generated from a rabbit immunized with a KLH conjugated synthetic peptide between 26-60 amino acids from human C1GALT1C1.
Clone:	RB56914
Isotype:	Ig Fraction
Predicted Reactivity:	B
Purification:	This antibody is purified through a protein A column, followed by peptide affinity purification.

Target Details

Target:	C1GALT1C1
Alternative Name:	C1GALT1C1 (C1GALT1C1 Products)

Target Details

Background: Probable chaperone required for the generation of 1 O- glycan Gal-beta1-3GalNAc-alpha1-Ser/Thr (T antigen), which is a precursor for many extended O-glycans in glycoproteins. Probably acts as a specific molecular chaperone assisting the folding/stability of core 1 beta-3-galactosyltransferase (C1GALT1).

Molecular Weight: 36382

UniProt: [Q96EU7](#)

Application Details

Application Notes: WB: 1:2000

Restrictions: For Research Use only

Handling

Format: Liquid

Buffer: Purified polyclonal antibody supplied in PBS with 0.09 % (W/V) sodium azide.

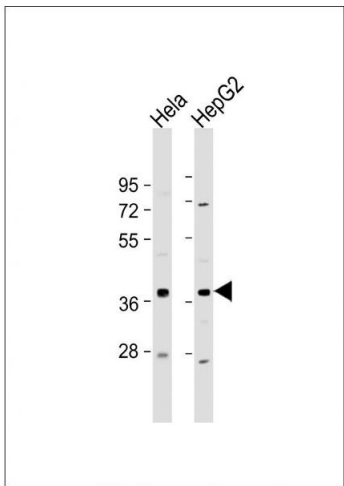
Preservative: Sodium azide

Precaution of Use: This product contains Sodium azide: a POISONOUS AND HAZARDOUS SUBSTANCE which should be handled by trained staff only.

Storage: 4 °C,-20 °C

Expiry Date: 6 months

Images



Western Blotting

Image 1. All lanes : Anti-C1GALT1C1 Antibody (N-Term) at 1:2000 dilution Lane 1: Hela whole cell lysate Lane 2: HepG2 whole cell lysate Lysates/proteins at 20 µg per lane. Secondary Goat Anti-Rabbit IgG, (H+L), Peroxidase conjugated at 1/10000 dilution. Predicted band size : 36 kDa Blocking/Dilution buffer: 5 % NFDM/TBST.